



ERSATZTEILE

SPARE PARTS

PIÈCES DETACHEES



EasyCut R 320

ab Masch.-Nr.
from mach.-no.
à partir de mach.-no

819 150 - 825 216

/ 150 050 569 00 H /

Erläuterungen Illustration Illustration

Gültigkeit dieser Tafel
Validity of this diagram
Validité du diagramme

Nr. der Zeichnung, die zu dieser Seite gehört
No. of drawing belonging to this page
No. du dessin appartenant à cette page

Tafel-Nr.
No. of diagram
No. de diagramme

Benennung dieser Tafel
Denomination of this diagram
Dénomination du diagramme

Maschinentypen
Type of machines
Type de machines

Nr. dieser Ersatzteilliste
No. of this spare part list
No. de cette liste des pièces de rechange

Tragrahmen / Schutze kpl.						000 001 084 00	
Frame / Guard cpl.						444 841 1	
Cadre / Protecteurs cpl.						4.0	
Pos.	ID-Nr.	Benennung	Description	Description	Masch.-Nr.	Bemerkung/Remarks/Remarque	
1	00 259 671 0	Tragrahmen links	Frame left	Cadre gauche	585 000 - 597 629	x	
	00 259 627 0	Tragrahmen rechts	Frame right	Cadre droite	585 000 - 597 629	x	
	00 901 491 0	6kt-Schraube	Hex head bolt	Boulon tete hex	590 000	x	M 16 X 130
3	00 909 912 0	Sperkantscheibe	Detent edged washer	Disque à bord d'arrêt	597 629	x	SKM 16

Dieses Ersatzteil ist gültig ab Masch.Nr. 590 000
This spare part is valid from mach. no. 590 000
Cette pièce de rechange est valable à partir de no. de machine 590 000

Dieses Ersatzteil ist gültig von Masch.Nr. 585 000 bis Masch.Nr. 597 629
This spare part is valid from mach. no. 585 000 up to mach. no. 597 629
Cette pièce de rechange est valable à partir de no. de machine 585 000 jusqu'au no. 597 629

Dieses Ersatzteil ist gültig bis Masch.Nr. 597 629
This spare part is valid up to mach. no. 597 629
Cette pièce de rechange est valable jusqu'au no. de machine 597 629

Bestell-Nr.
Order no.
No. de commande

Position des Ersatzteiles in der Zeichnung
Position of spare part in the drawing
Position de la pièce de rechange au dessin

**Ersatzteil-Katalog auch
auf CD-ROM erhältlich!**
**Spare parts list also
available as CD-ROM!**
**Catalogue de pièces de rechange
également disponible sur CD-ROM!**

Anzahl Teile je Typ

X = nach Bedarf
Kein Eintrag = Keine Verwendung für diesen Typ

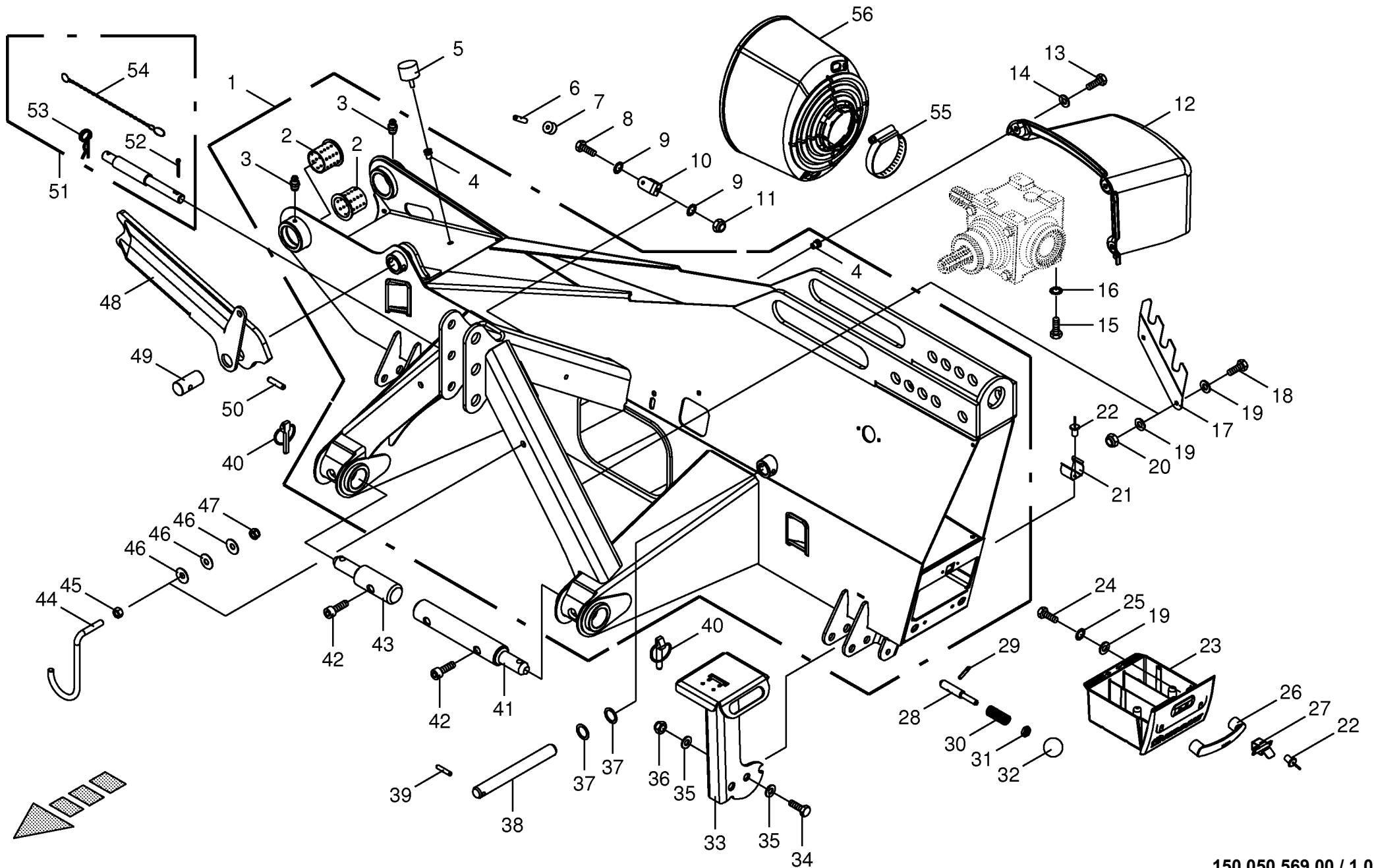
Quantity of parts for each type

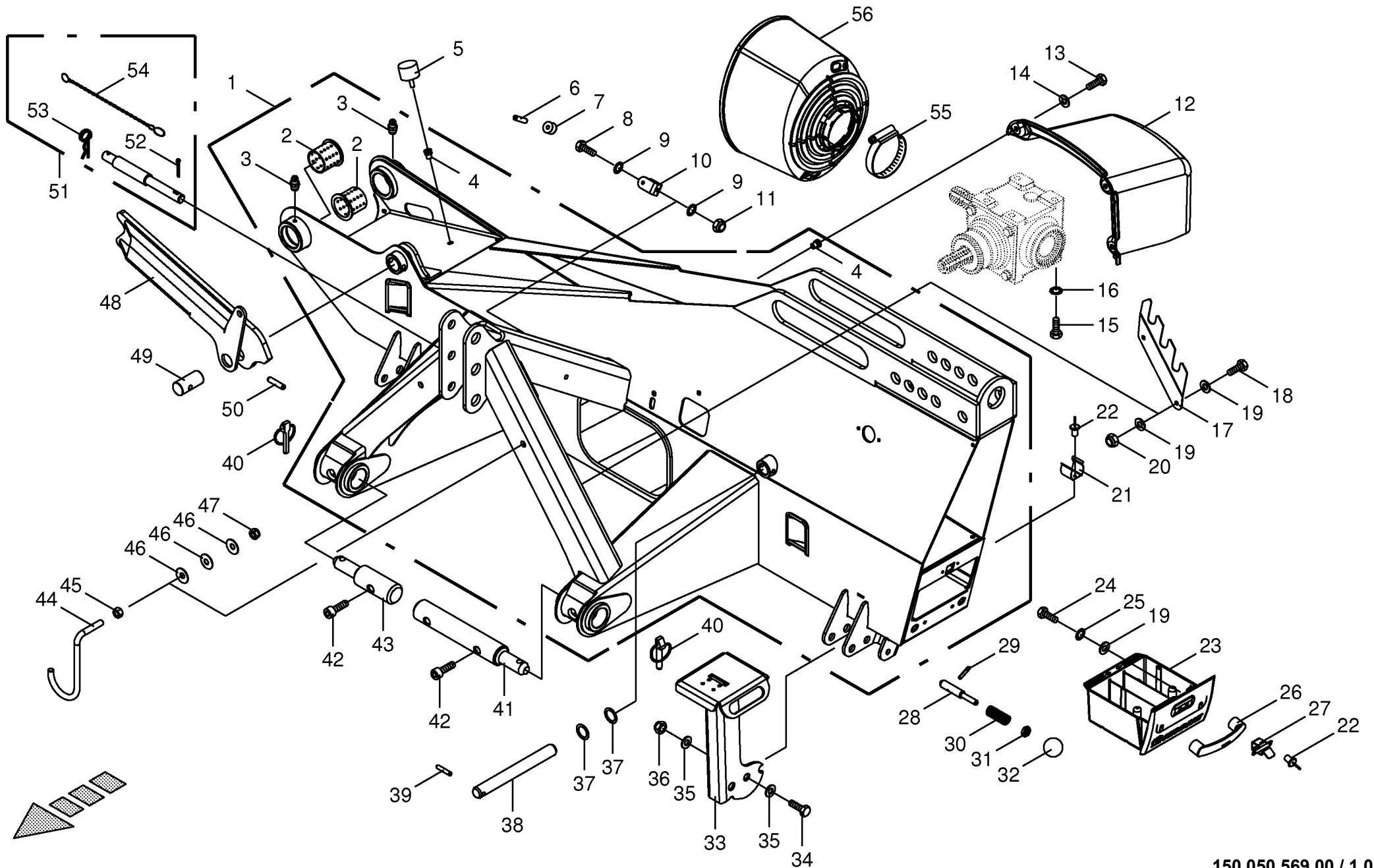
X = as needed
No entry = No use for this type

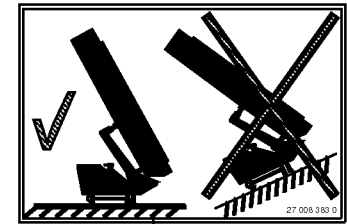
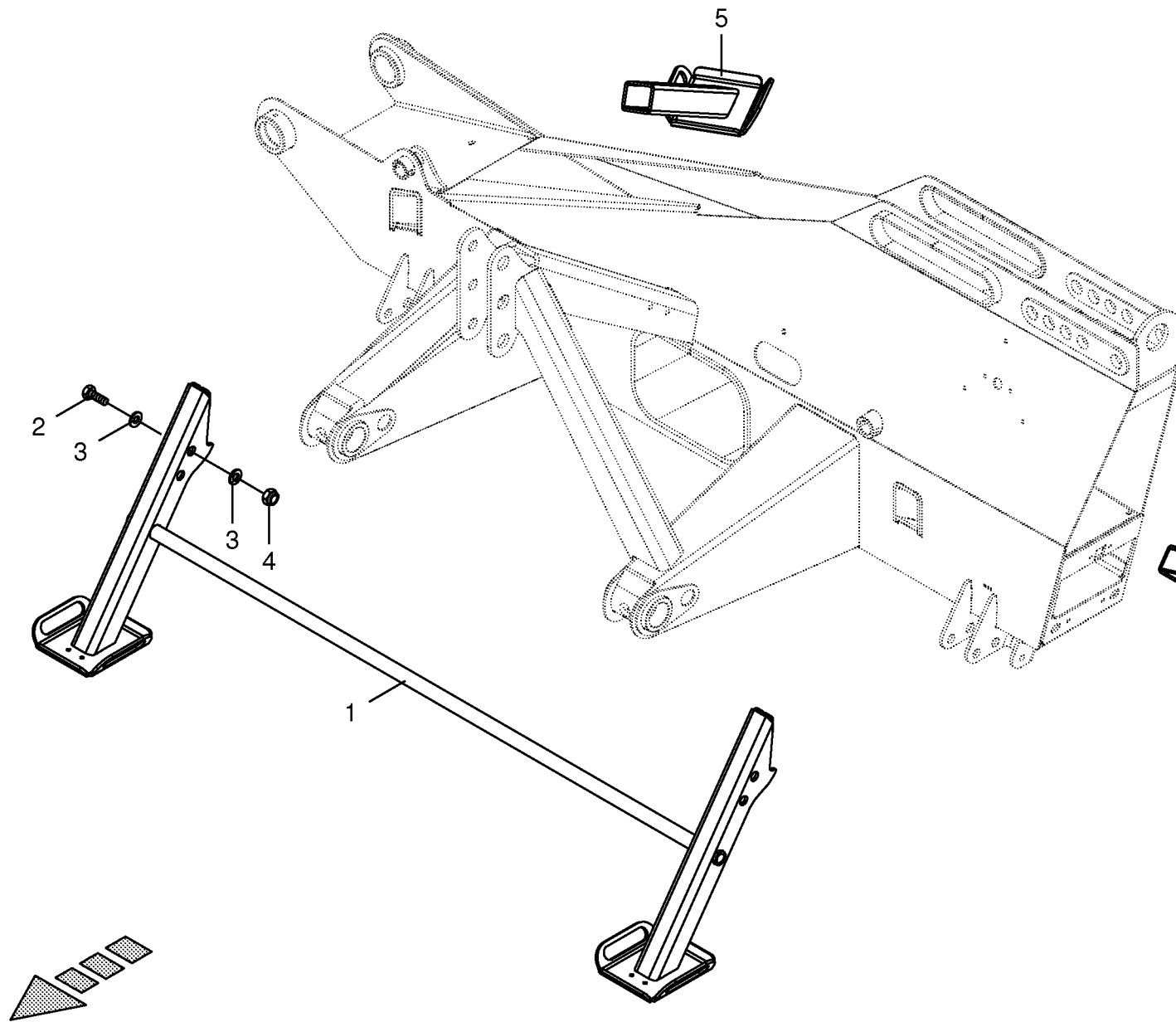
Quantité de pièces de chaque type

X = selon besion
Aucune inscription = Pa d'utilisation pour ce type

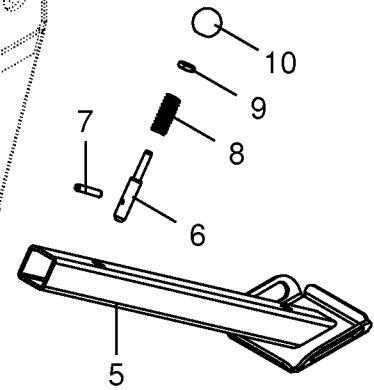
INHALTSVERZEICHNIS	TABLE OF CONTENTS	TABLE DES MATIERES	TAFEL DIAGRAM DIAGRAMME
Dreipunktbock Stützfuß Auslegearm Tragarm	Headstock Support jack Outrigger arm Support arm	Cadre trois points Béquille Bras de flèche Branche de porter	1.0 2.0 3.0 4.0
Federentlastung / Hydraulik Hydraulische Federentlastung Schutze kpl. Schwadbblech rechts	Spring compensation / Hydraulics Hydraulic spring compensation Guard cpl. Swath board right	Ressort compensateur / Sys. hydraulique Ressort compensateur hydraulique Protecteurs cpl. Tôle à andains droite	5.0 6.0 7.0 8.0
Schwadbblech links Hauptgetriebe kpl. 540 U/min Hauptgetriebe kpl. 1000 U/min Getriebe	Swath board left Main gearbox cpl. 540 U/min Main gearbox cpl. 1000 U/min Gearbox	Tôle à andains gauche Carter principal cpl 540 U/min Carter principal cpl 1000 U/min Carter	9.0 10.0 11.0 12.0
Mähholm - SafeCut INSIDE Lagergehäuse - SafeCut INSIDE Messerschraubverschluss Messerschnellverschluss	Cutter bar - SafeCut INSIDE Bearing housing - SafeCut INSIDE Blade fastening Blade quick coupler	Lamier - SafeCut INSIDE Cage de roulement - SafeCut INSIDE Fixation de couteaux Bride à fermeture rapide de couteaux	13.0 14.0 15.0 16.0
Hochschnittkufe / Verschleisskufe Aussenabstützung Zubehörteile Osteuropäische Staaten Hauptgelenkwelle Walterscheid	High-cut skid / Wear skid External support Accessories for East European countries Main Pto shaft	Sabot coupe haute / Patin Appui extérieur Accessoires pour est-europeens Arbre à cardans primaire	17.0 18.0 19.0 20.0
Gelenkwelle Walterscheid Gelenkwelle - Krone T 40 Gelenkwelle - Krone T 40 Hauptgelenkwelle	P.T.O shafts P.T.O shafts - Krone T 40 P.T.O shafts - Krone T 40 Main Pto shaft	Arbre à cardans Arbre à cardans - Krone T 40 Arbre à cardans - Krone T 40 Arbre à cardans primaire	21.0 22.0 23.0 24.0
Gelenkwelle Gelenkwelle Hinweisaufkleber Sicherheitsaufkleber	P.T.O shafts P.T.O shafts General information labels Warning signs	Arbre à cardans Arbre à cardans Plaque indicatrices generales Plaque indicatrices de securite	25.0 26.0 27.0 28.0

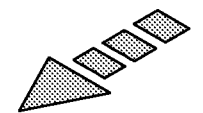
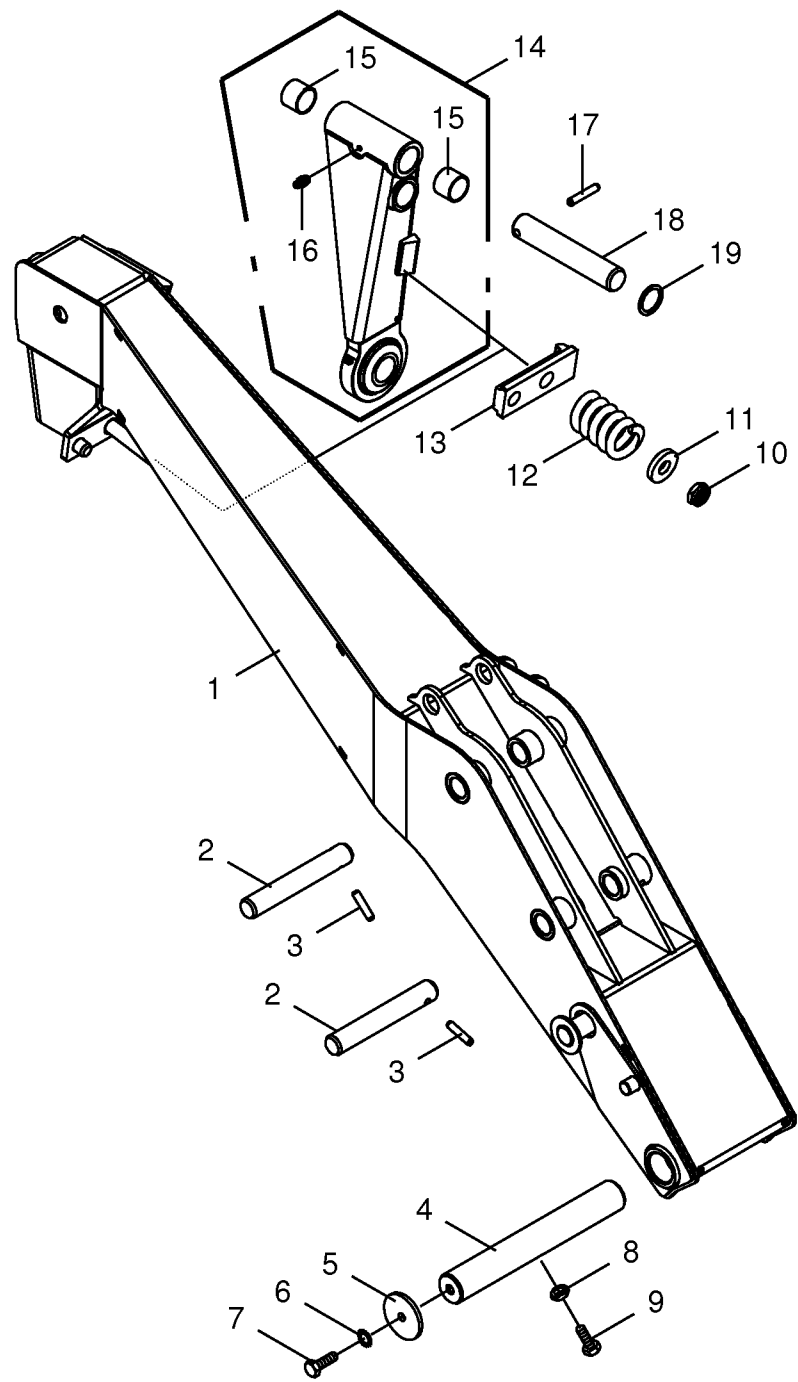






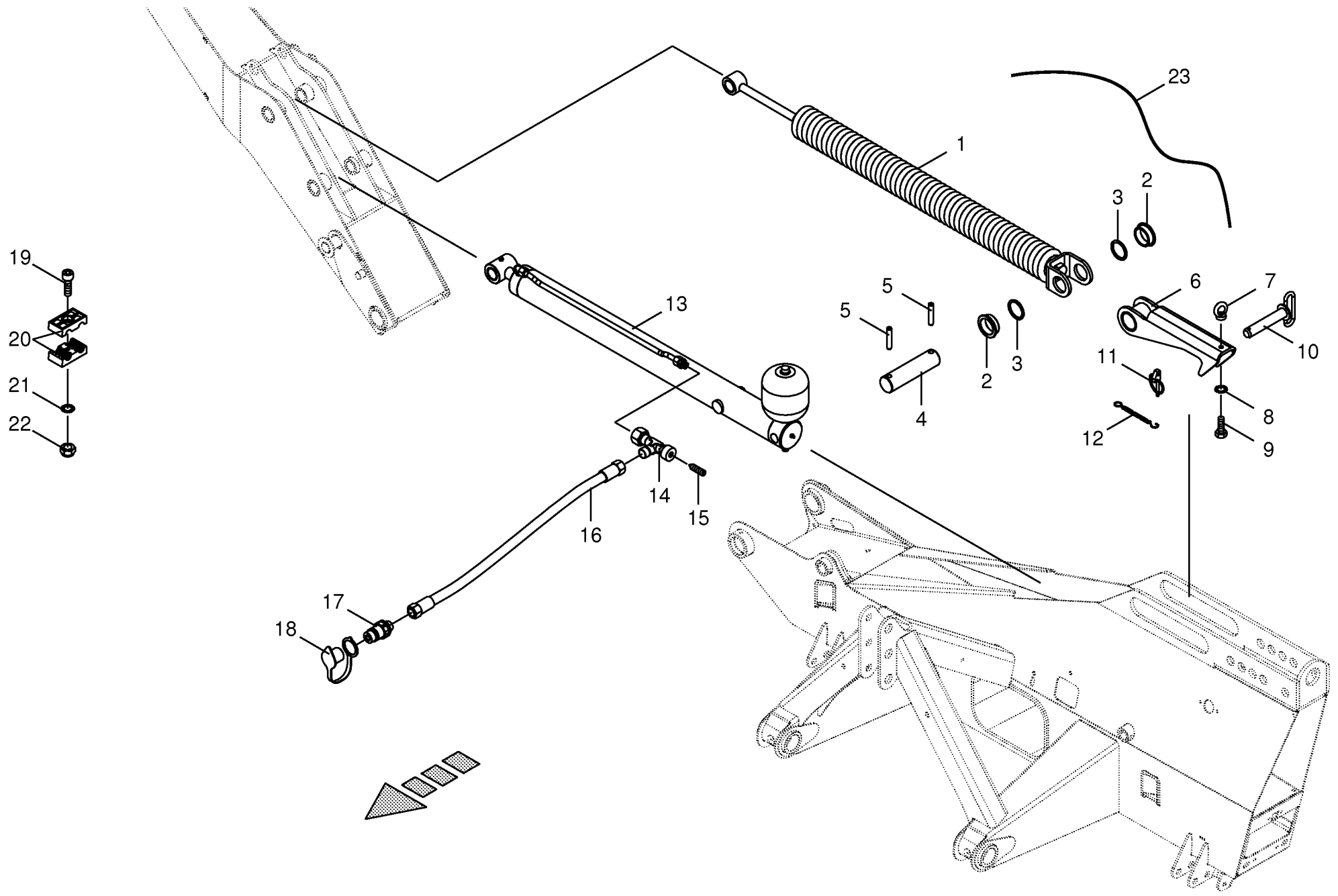
11

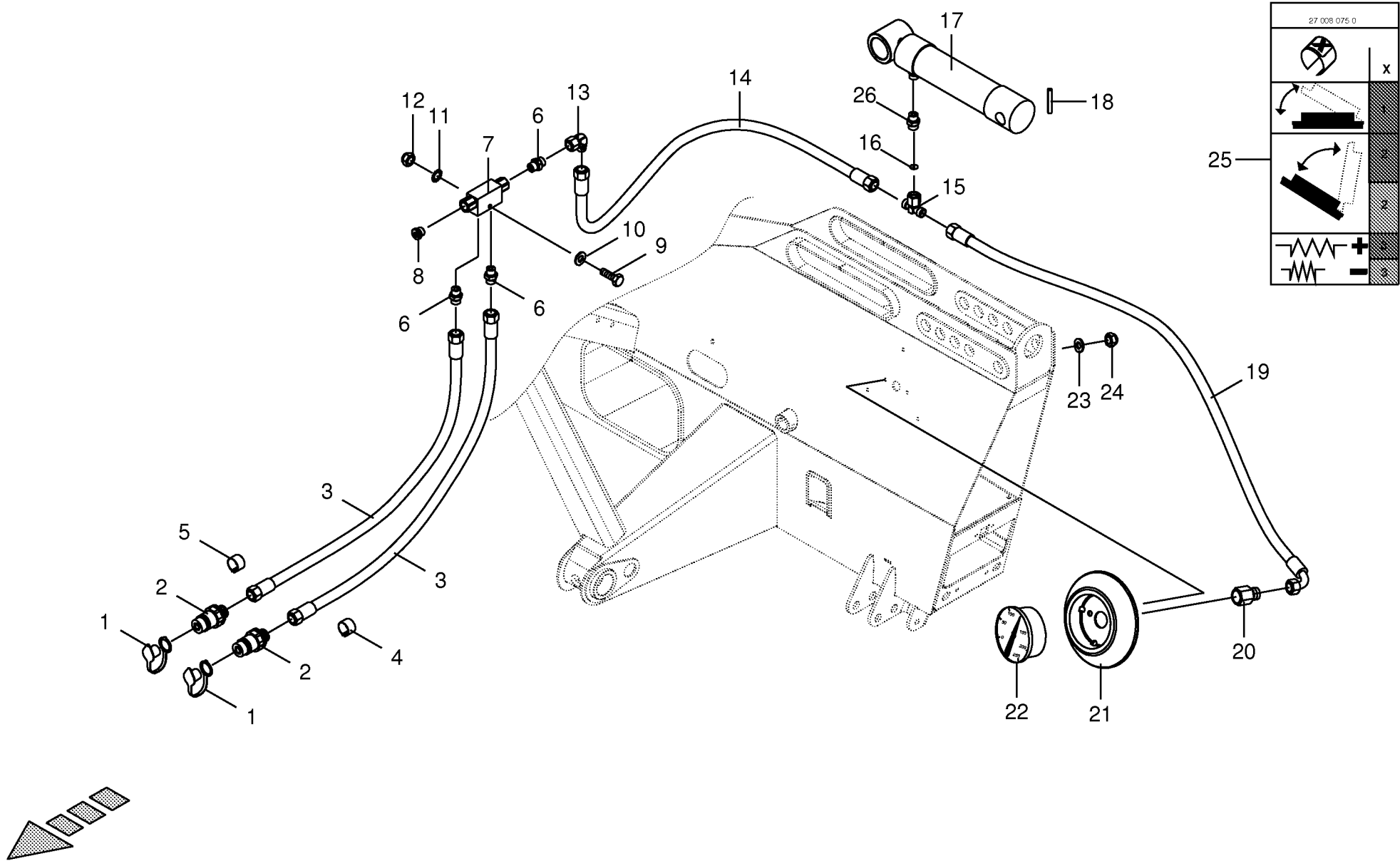


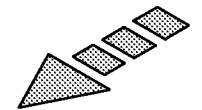
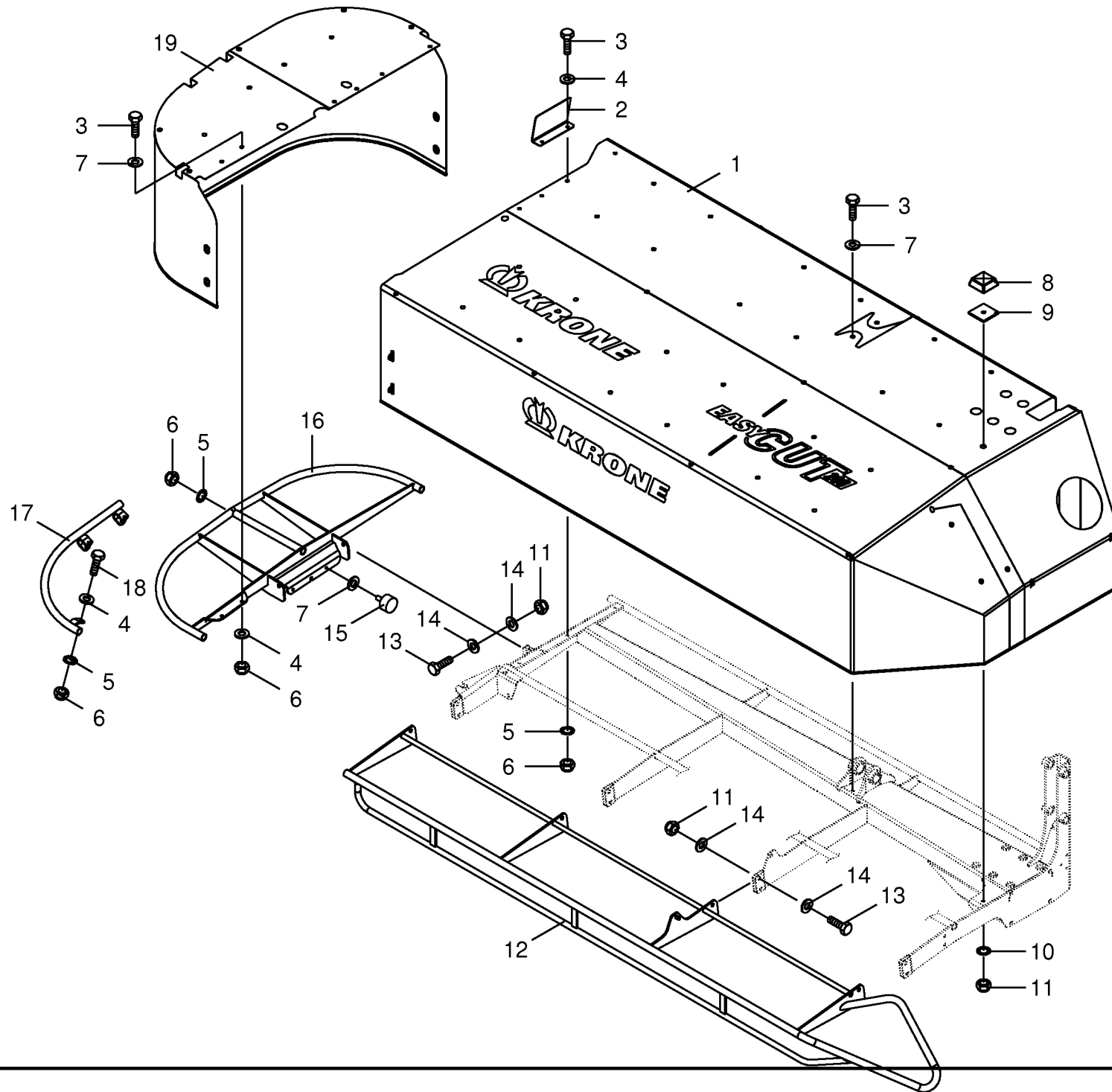


150 050 569 00 / 3.0

150 388 494 01

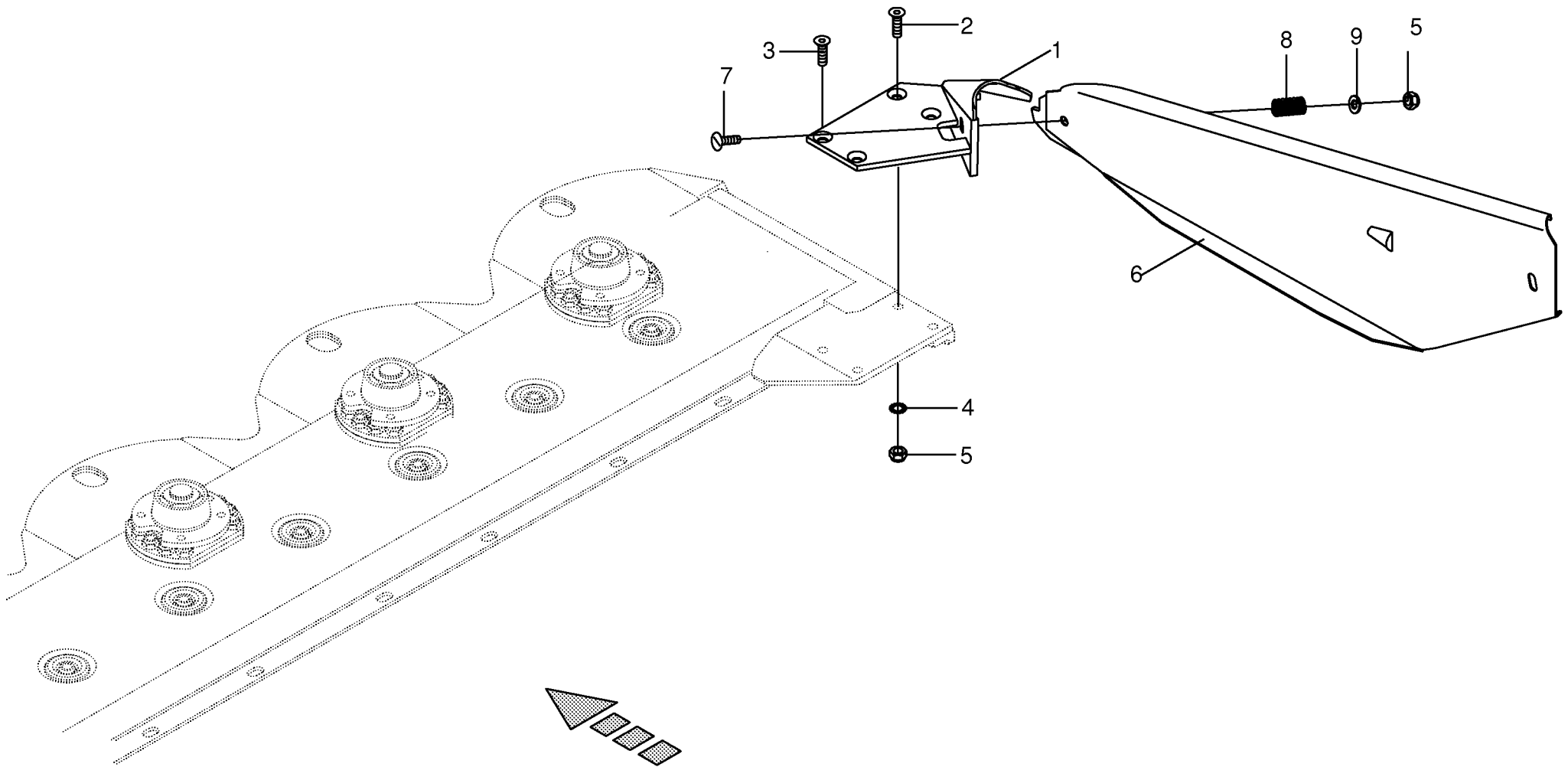


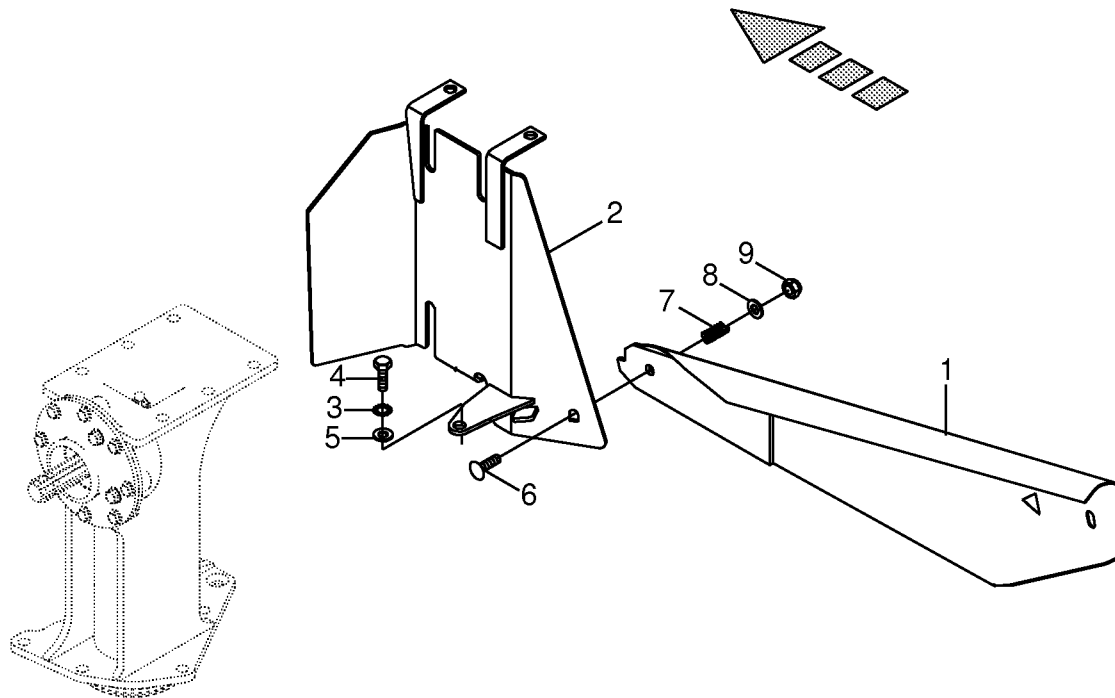


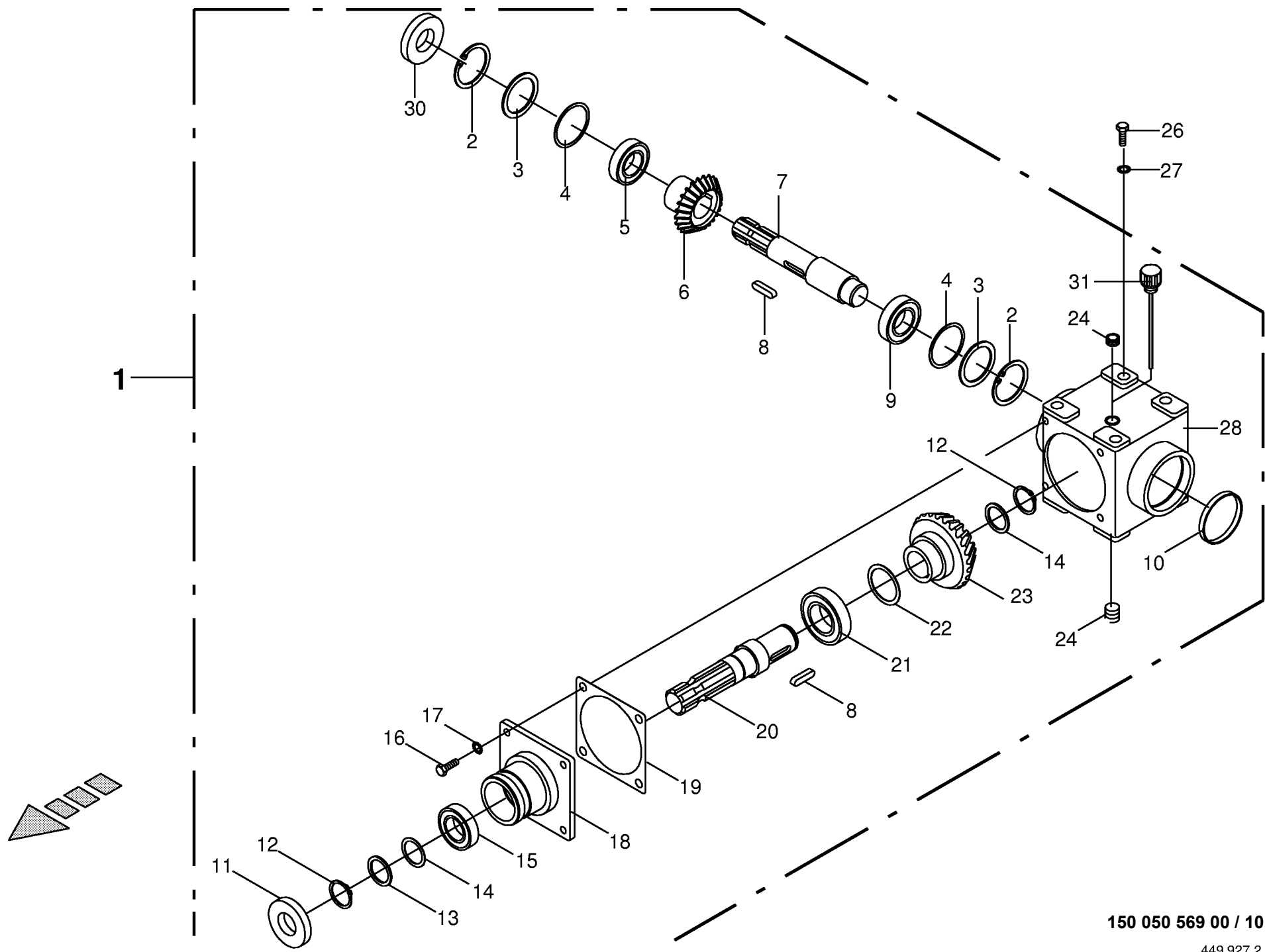


150 050 569 00 / 7.0

150 388 534 01



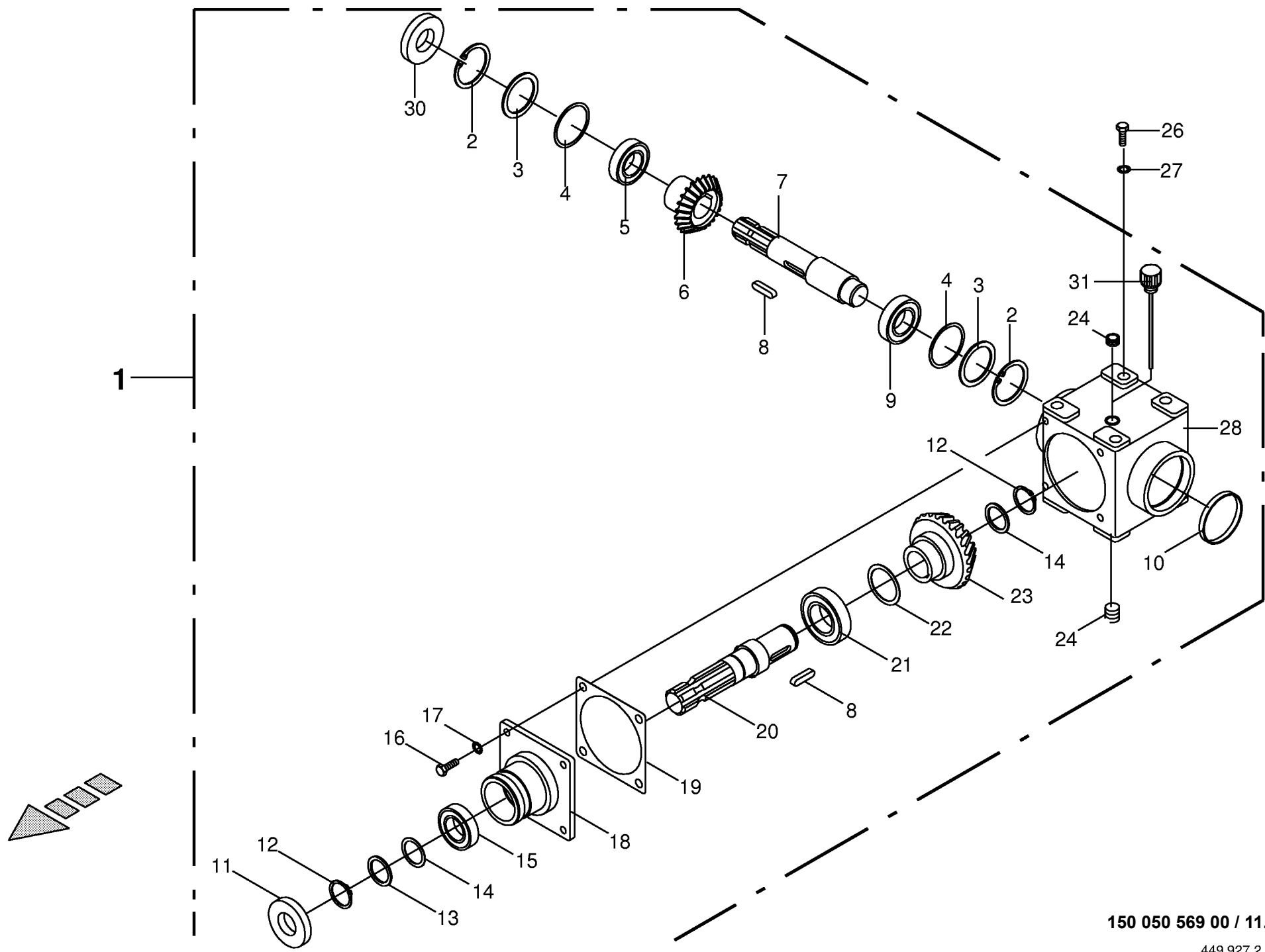




150 050 569 00 / 10.0

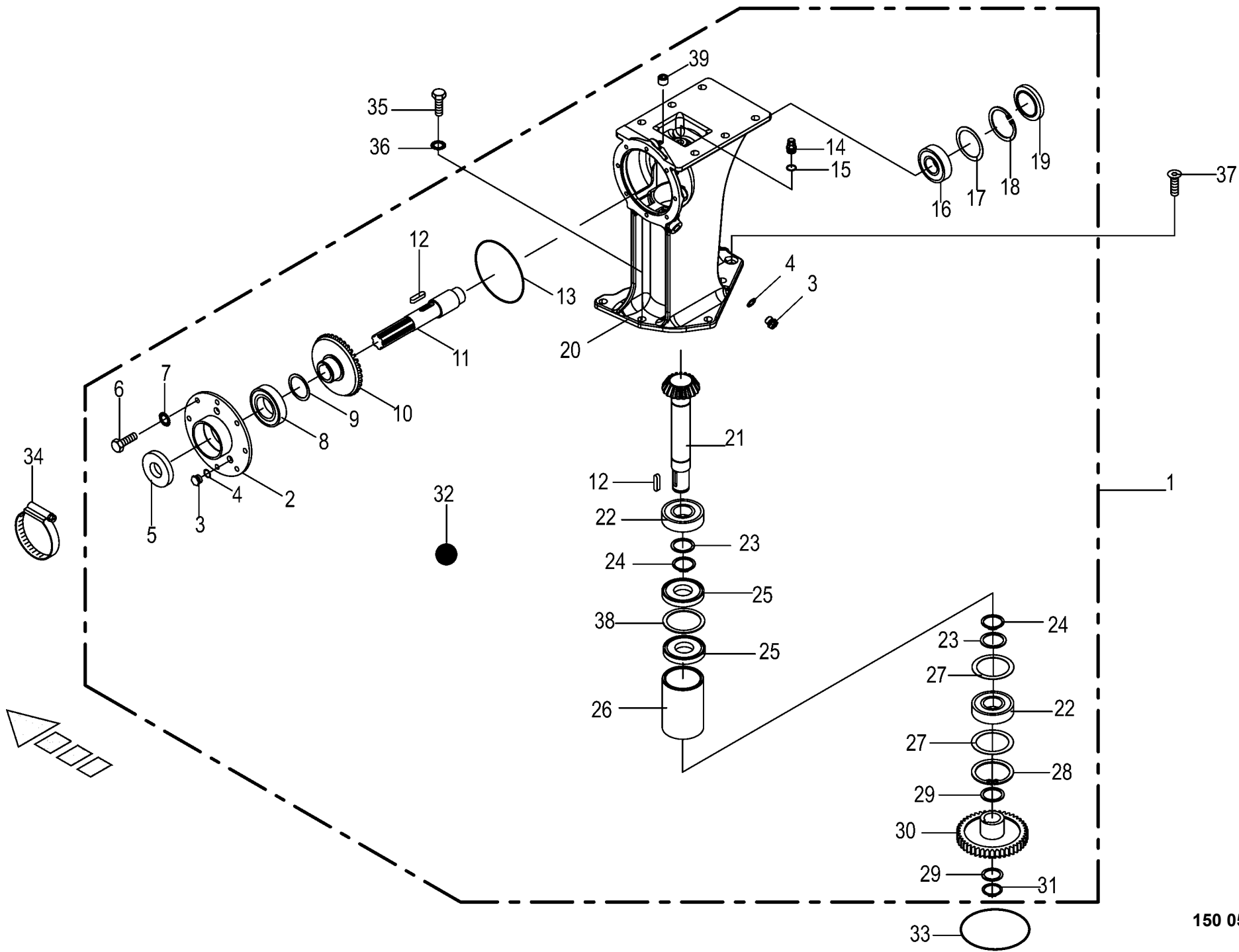
449 927 2

Hauptgetriebe cpl. 540 U/min Main gearbox cpl. 540 U/min Carter principal cpl 540 U/min						819150 - 825216	E C R 3 2 0						150 050 569 00	
Pos.	ID-Nr.	Benennung	Description	Description	Masch.-Nr-								449 927 2	10.0
													Bemerkung/Remarks/Remarque	
1	00 253 070 3	Hauptgetriebe	Main gearbox	Boîte de vitesses principal		x								
	00 926 101 0	Getriebeöl -Id.-Nr.= 1ltr	Oil -Id.-no.= 1ltr	Huile -Id.-no.= 1ltr		0,5								
2	00 911 673 0	Sicherungsring	Circlip	Circlip		x							80 X 2,5	
3	00 910 741 1	Stützscheibe	Supporting disc	Rondelle diélectrique		x							S 63 X 80 X 3	
4	00 911 022 0	Passscheibe	Shim ring	Rondelle d'ajustage		x							70 X 80 X 0,1	
	00 911 023 0	Passscheibe	Shim ring	Rondelle d'ajustage		x							70 X 80 X 0,3	
	00 911 024 1	Passscheibe	Shim ring	Rondelle d'ajustage		x							70 X 80 X 1,0	
5	00 932 177 0	Kegelrollenlager	Taper roller bearing	Roulement à rouleaux coniques		x							32010 X	
6	00 146 984 1	Kegelrad	Bevel wheel	Pignon conique		x							Z= 16	
7	00 146 974 1	Getriebewelle	Gearbox shaft	Arbre de boîte de vitesse		x							Rd. 42 X 270	
8	00 915 122 0	Passfeder	Fit-in key	Clavette		x							A 10 X 8 X 40	
9	00 930 167 0	Rillenkugellager	Grooved ball bearing	Roulement à gorge		x							6307	
10	00 925 205 2	Verschlussdeckel	Sealing cap	Couvercle de fermeture		x							Rd. 80	
11	00 936 337 1	Radial-Wellendichtring	Radial-shaft sealing ring	Radial-bague d'étanchéité		x							A 35 X 72 X 12	
12	00 911 541 0	Sicherungsring	Circlip	Circlip		x							A 35 X 1,5	
13	00 910 727 1	Stützscheibe	Supporting disc	Rondelle diélectrique		x							S 35 X 45 X 2,5	
14	00 911 130 0	Passscheibe	Shim ring	Rondelle d'ajustage		x							35 X 45 X 0,1	
	00 911 132 0	Passscheibe	Shim ring	Rondelle d'ajustage		x							35 X 45 X 0,3	
	00 911 133 0	Passscheibe	Shim ring	Rondelle d'ajustage		x							35 X 45 X 0,5	
	00 911 134 0	Passscheibe	Shim ring	Rondelle d'ajustage		x							35 X 45 X 1,0	
15	00 930 137 0	Rillenkugellager	Grooved ball bearing	Roulement à gorge		x							6207	
16	00 900 655 0	6kt-Schraube	Hex head bolt	Boulon tête hex		x							M 12 X 25	
17	00 909 910 1	Sperrkantscheibe	Detent edged washer	Disque à bord d'arrêt		x							SKM 12	
18	00 146 976 4	Getriebedeckel	Gearbox cover	Couvercle du boîte de vitesses		x								
19	00 145 212 1	Getriebedichtung	Gearbox seal	Joint de boîte de vitesses		x								
20	00 145 215 4	Getriebewelle	Gearbox shaft	Arbre de boîte de vitesse		x							Rd. 42 X 193	
21	00 932 155 0	Kegelrollenlager	Taper roller bearing	Roulement à rouleaux coniques		x							32210 A	
22	00 910 900 0	Passscheibe	Shim ring	Rondelle d'ajustage		x							50 X 62 X 0,1	
	00 910 902 0	Passscheibe	Shim ring	Rondelle d'ajustage		x							50 X 62 X 0,3	
	00 910 903 0	Passscheibe	Shim ring	Rondelle d'ajustage		x							50 X 62 X 0,5	
	00 910 904 0	Passscheibe	Shim ring	Rondelle d'ajustage		x							50 X 62 X 1,0	
23	00 146 985 2	Kegelrad	Bevel wheel	Pignon conique		x							Z= 22	
24	00 906 040 1	Verschlusschraube	Screw plug	Bouchon fileté		x							M 18 X 1,5	
26	00 900 673 0	6kt-Schraube	Hex head bolt	Boulon tête hex		x							M 16 X 25	
27	00 909 912 1	Sperrkantscheibe	Detent edged washer	Disque à bord d'arrêt		x							SKM 16	
28	00 267 330 0	Getriebegehäuse	Gearbox housing	Carter du boîte de vitesses		x								
30	00 936 339 1	Radial-Wellendichtring	Radial-shaft sealing ring	Radial-bague d'étanchéité		x							A 35 X 80 X 13	
31	00 490 161 1	Ölmessstab	Oil level dipstick	Jauge de niveau d'huile		1							M 18 X 1,5	



150 050 569 00 / 11.0

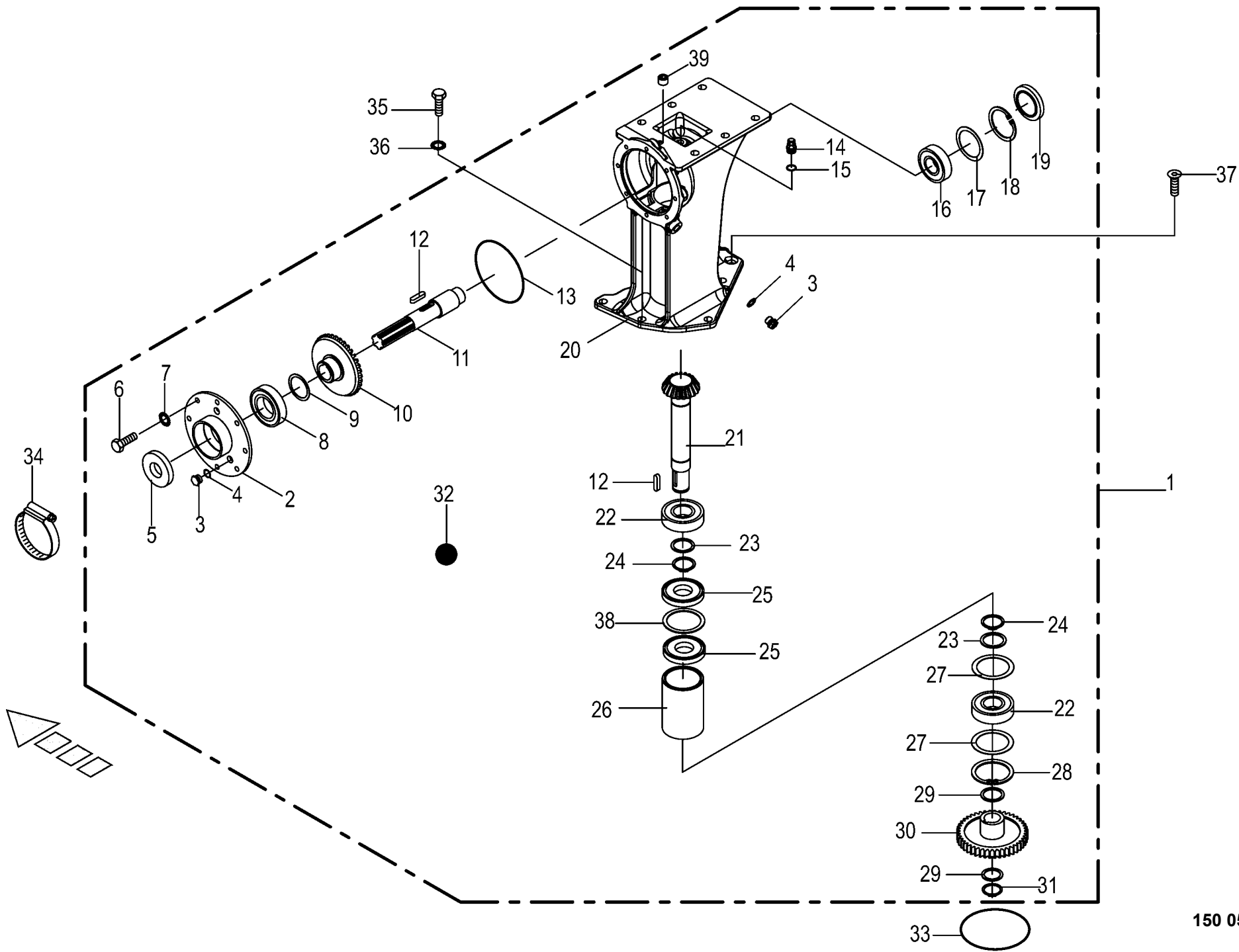
449 927 2



150 050 569 00 / 12.0

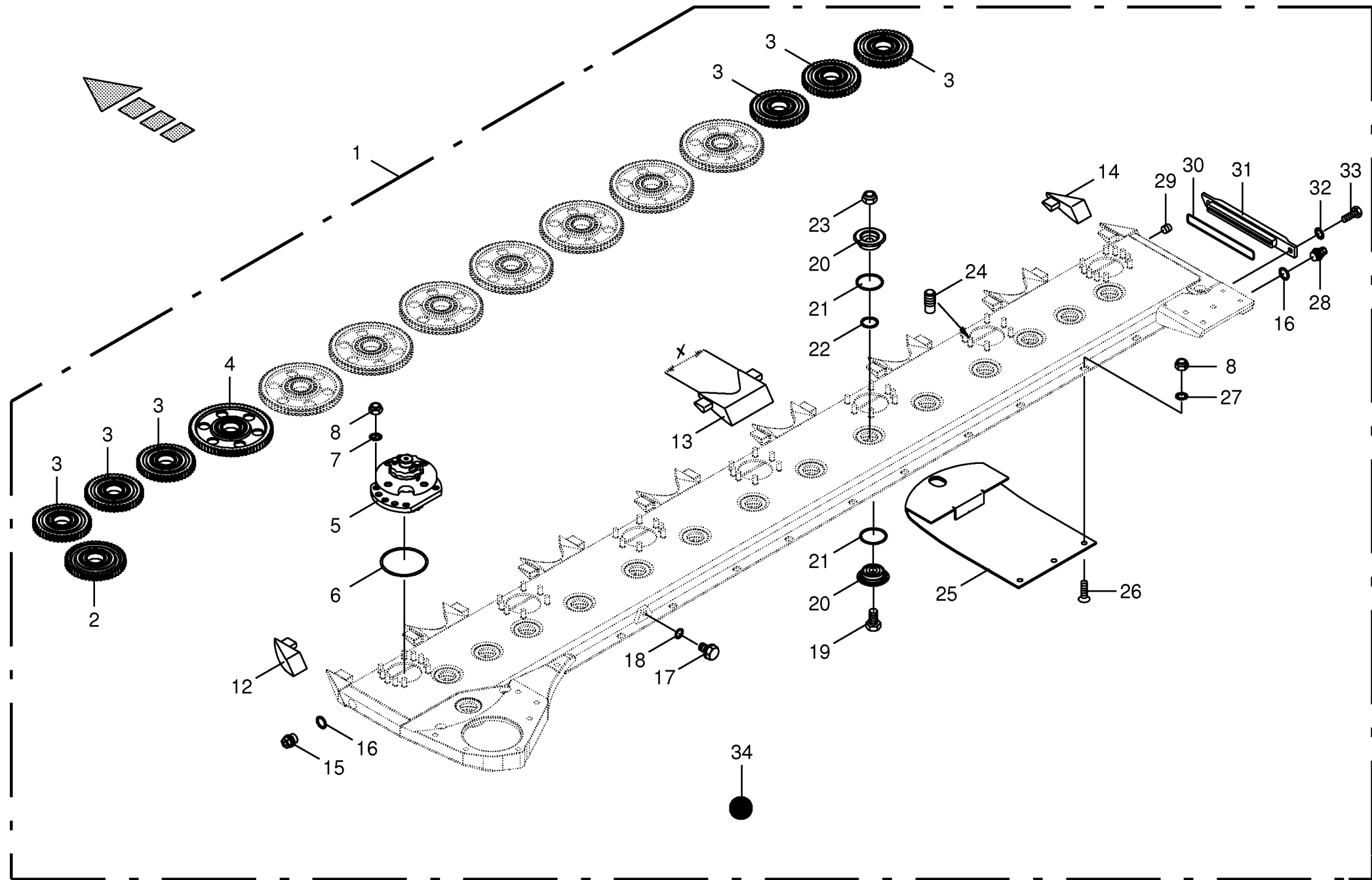
443 037 3

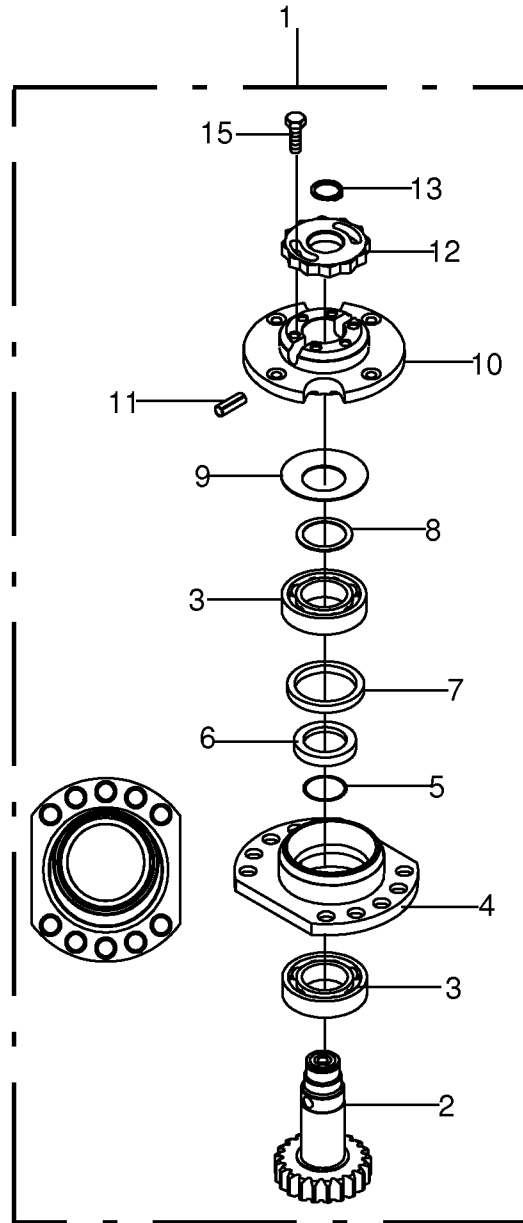
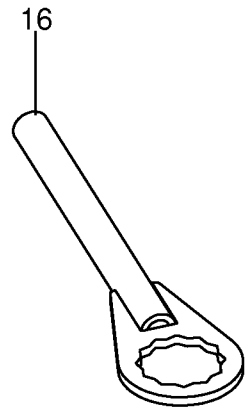
Getriebe Gearbox Carter						819150 - 825216	E C R 3 2 0						150 050 569 00	
Pos.	ID-Nr.	Benennung	Description	Description	Masch.-Nr-								443 037 3	12.0
													Bemerkung/Remarks/Remarque	
1	00 253 777 0	Getriebe -kpl.	Gearbox -cpl.	Boîte de vitesses -cpl.		x								
2	00 253 062 3	Getriebedeckel	Gearbox cover	Couvercle du boîte de vitesses		x								
3	00 906 007 1	Verschlussschraube	Screw plug	Bouchon fileté		x							M 16 X 1,5	
4	00 937 721 0	Dichtring	Gasket ring	Bague d'étanchéité		x							A 16 X 22	
5	00 936 339 1	Radial-Wellendichtring	Radial-shaft sealing ring	Radial-bague d'étanchéité		x							A 35 X 80 X 13	
6	00 900 636 0	6kt-Schraube	Hex head bolt	Boulon tête hex		x							M 10 X 25	
7	00 909 909 1	Sperrkantscheibe	Detent edged washer	Disque à bord d'arrêt		x							SKM 10	
8	00 930 140 0	Rillenkugellager	Grooved ball bearing	Roulement à gorge		x							6210	
9	00 910 904 0	Passscheibe	Shim ring	Rondelle d'ajustage		x							50 X 62 X 1,0	
10	00 253 065 1	Tellerrad	Crown wheel	Grande couronne		x							Z= 36	
11	00 253 063 1	Antriebswelle	Drive shaft	Arbre d'entraînement		x							Rd. 42 X 250	
12	00 915 122 0	Passfeder	Fit-in key	Clavette		x							A 10 X 8 X 40	
13	00 937 590 0	O-Ring	O-ring	Joint torique		x							144,5 X 3	
14	00 919 811 1	Entlüftungsfiter	Breather	Reniflard		x							M 18 X 1,5	
15	00 937 727 0	Dichtring	Gasket ring	Bague d'étanchéité		x							A 18 X 24	
16	00 930 167 0	Rillenkugellager	Grooved ball bearing	Roulement à gorge		x							6307	
17	00 910 964 0	Passscheibe	Shim ring	Rondelle d'ajustage		x							63 X 80 X 1,0	
	00 910 965 0	Passscheibe	Shim ring	Rondelle d'ajustage		x							63 X 80 X 2,0	
18	00 911 673 0	Sicherungsring	Circlip	Circlip		x							80 X 2,5	
19	00 925 205 2	Verschlussdeckel	Sealing cap	Couvercle de fermeture		x							Rd. 80	
20	00 253 784 1	Gehäuse	Housing	Carter		x							h= 450	
21	00 253 659 1	Ritzelwelle	Pinion shaft	Arbre de pignon		x							Z= 19	
22	00 930 568 0	Rillenkugellager	Grooved ball bearing	Roulement à gorge		x							6308 2RS	
23	00 910 885 0	Passscheibe	Shim ring	Rondelle d'ajustage		x							40 X 50 X 2	
24	00 911 545 0	Sicherungsring	Circlip	Circlip		x							A 40 X 1,75	
25	00 936 365 1	Radial-Wellendichtring	Radial-shaft sealing ring	Radial-bague d'étanchéité		x							A 40 X 90 X 12	
26	20 030 255 0	Distanzhülse	Spacer bushing	Douille entretoise		x							80,8 X 88,9 X 177	
27	00 910 974 0	Passscheibe	Shim ring	Rondelle d'ajustage		x							70 X 90 X 1,0	
28	00 911 680 0	Sicherungsring	Circlip	Circlip		x							90 X 3	
29	00 911 136 1	Passscheibe	Shim ring	Rondelle d'ajustage		x							35 X 45 X 2,0	
30	00 253 034 4	Stirnrad	Spur gear	Roue d'engrenage		x							Z= 44	
31	00 911 541 0	Sicherungsring	Circlip	Circlip		x							A 35 X 1,5	
32	00 926 101 0	Getriebeöl -Id.-Nr.= 1ltr	Oil -Id.-no.= 1ltr	Huile -Id.-no.= 1ltr		0,5								
33	00 937 568 0	O-Ring	O-ring	Joint torique		x							151,99 X 3,53	
34	00 924 007 0	Schneckenengewindeschelle	Tube clip	Bride		x							90 - 110	
35	00 900 675 0	6kt-Schraube	Hex head bolt	Boulon tête hex		x							M 16 X 40	
36	00 909 912 1	Sperrkantscheibe	Detent edged washer	Disque à bord d'arrêt		x							SKM 16	
37	00 904 019 2	Senkschraube	Countersunkscrew	Vis à tête fraisée		x							M 16 X 40	

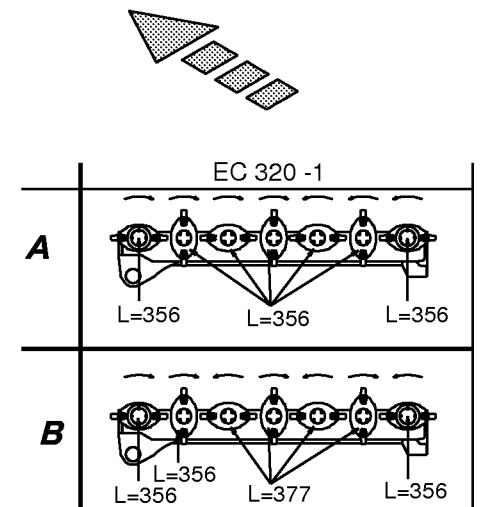
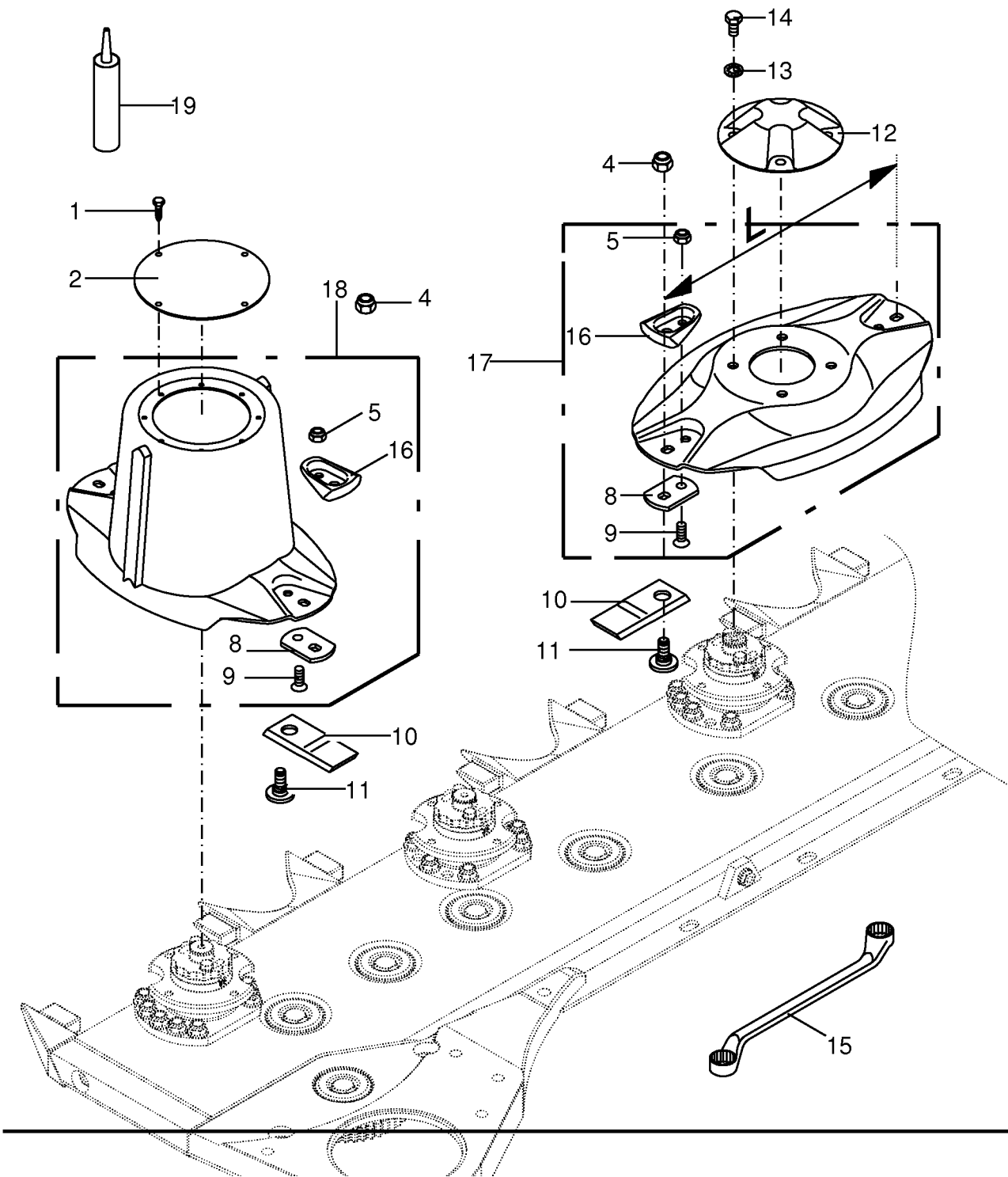


150 050 569 00 / 12.0

443 037 3

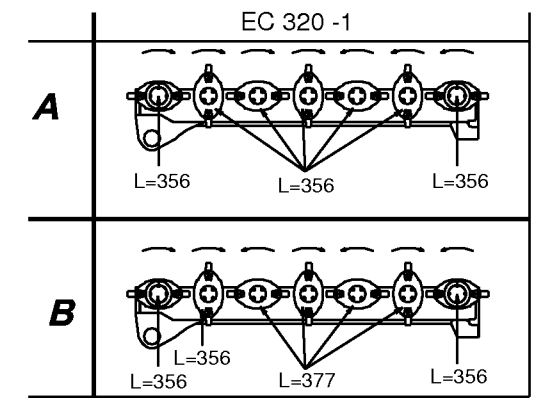
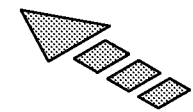
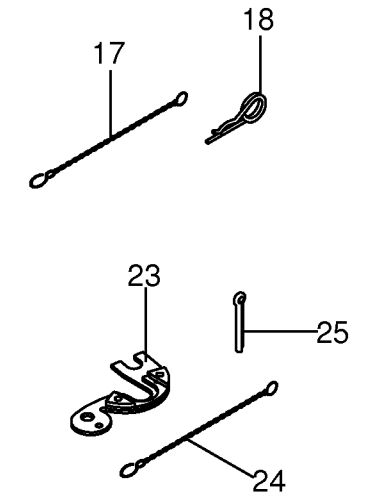
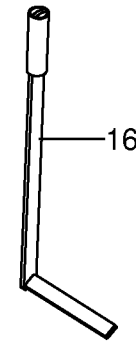
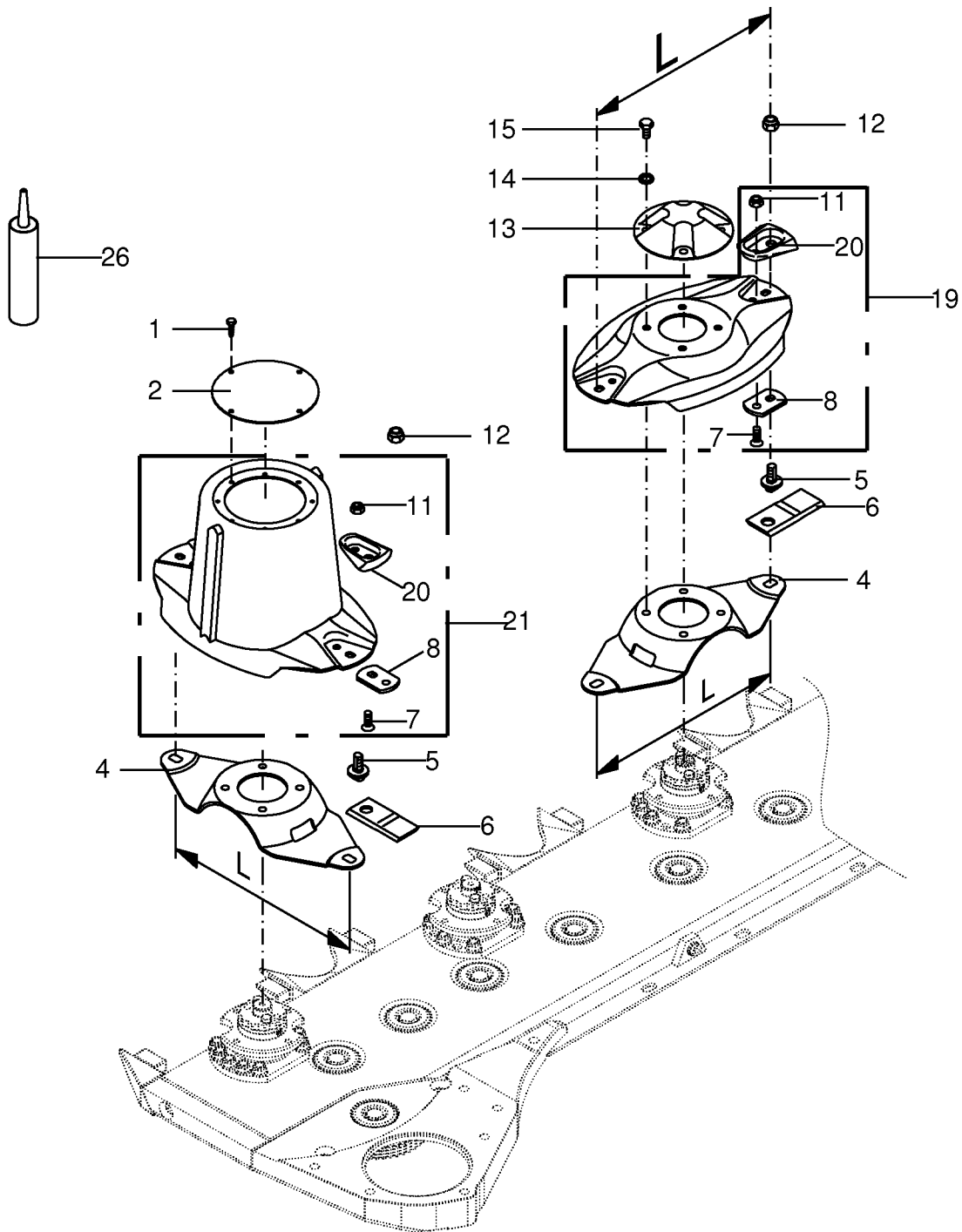


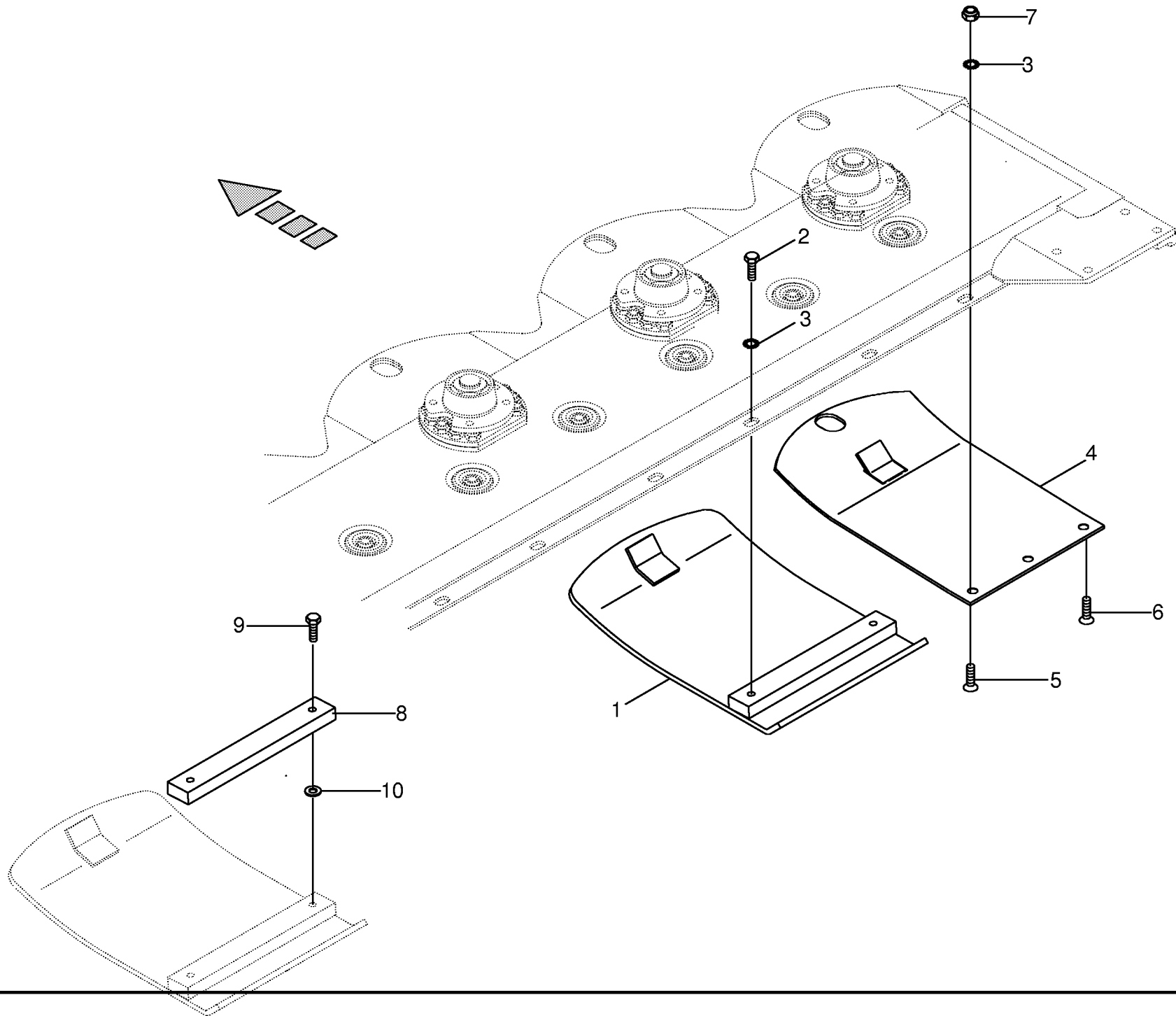


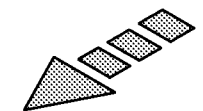
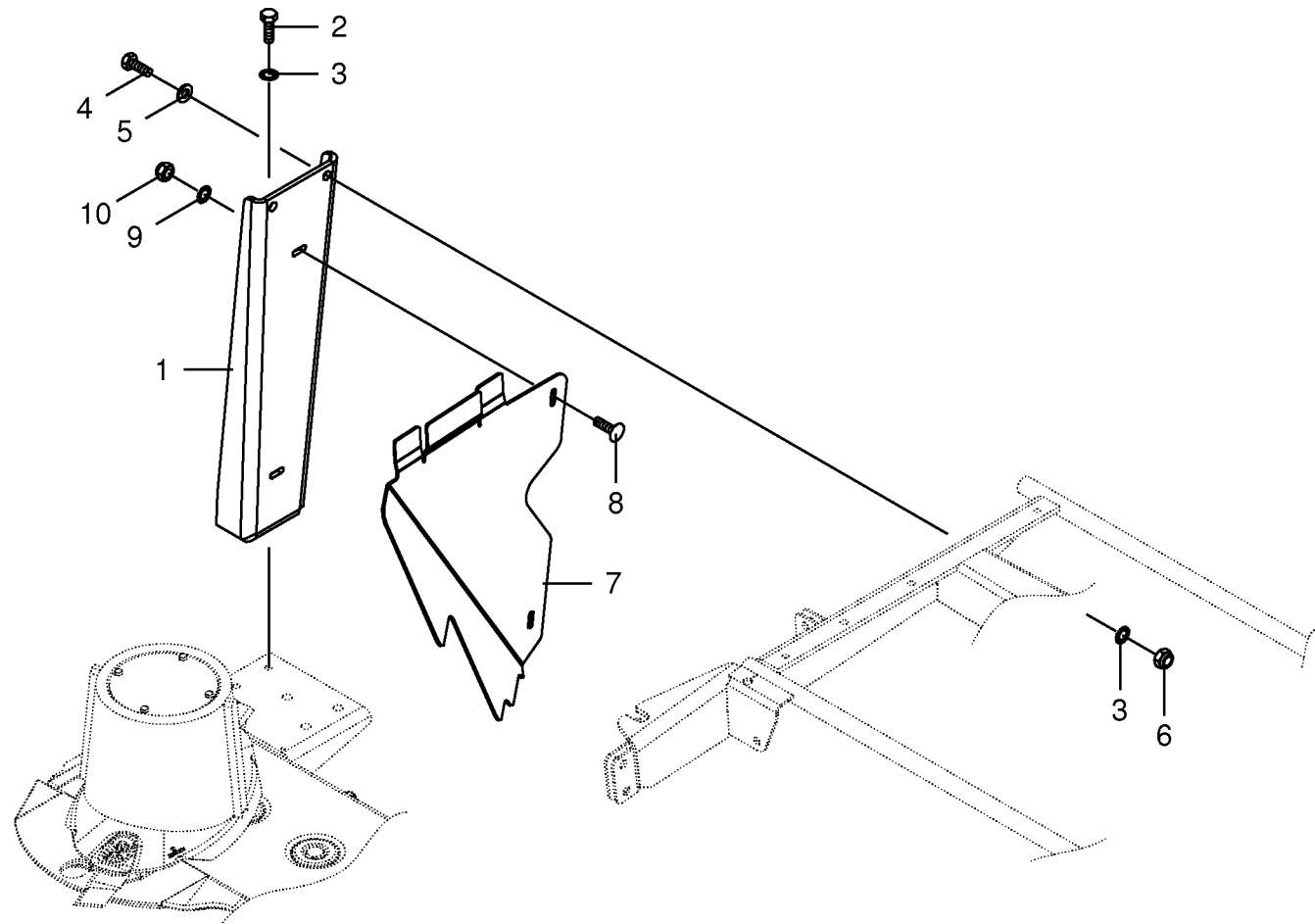


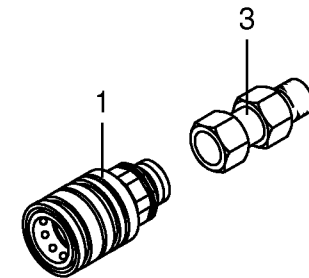
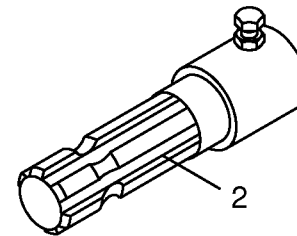
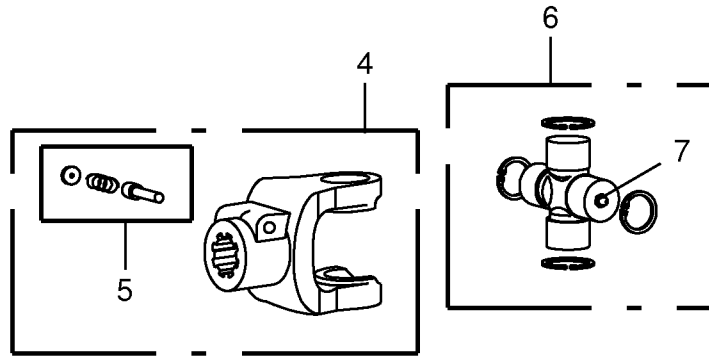
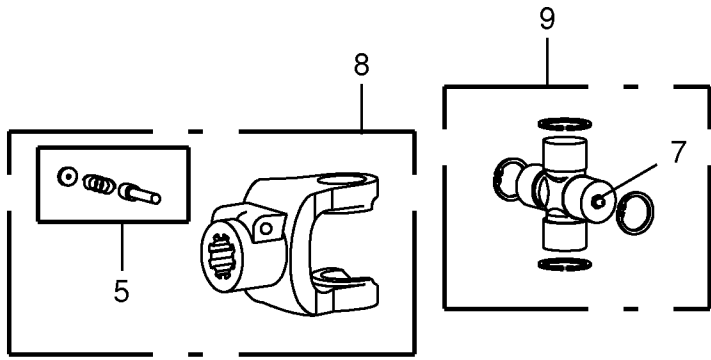
150 050 569 00 / 15.0

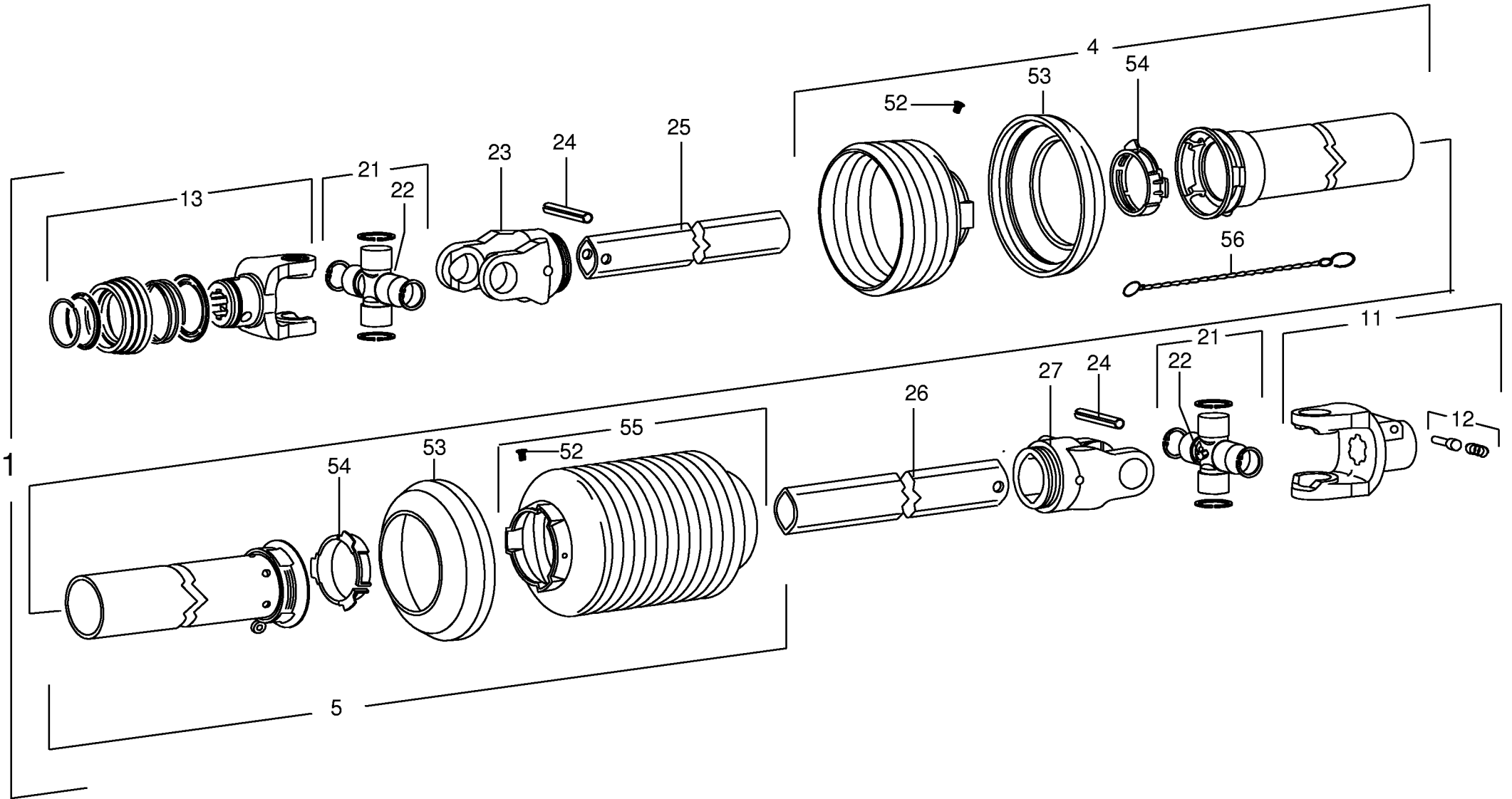
150 388 699 01

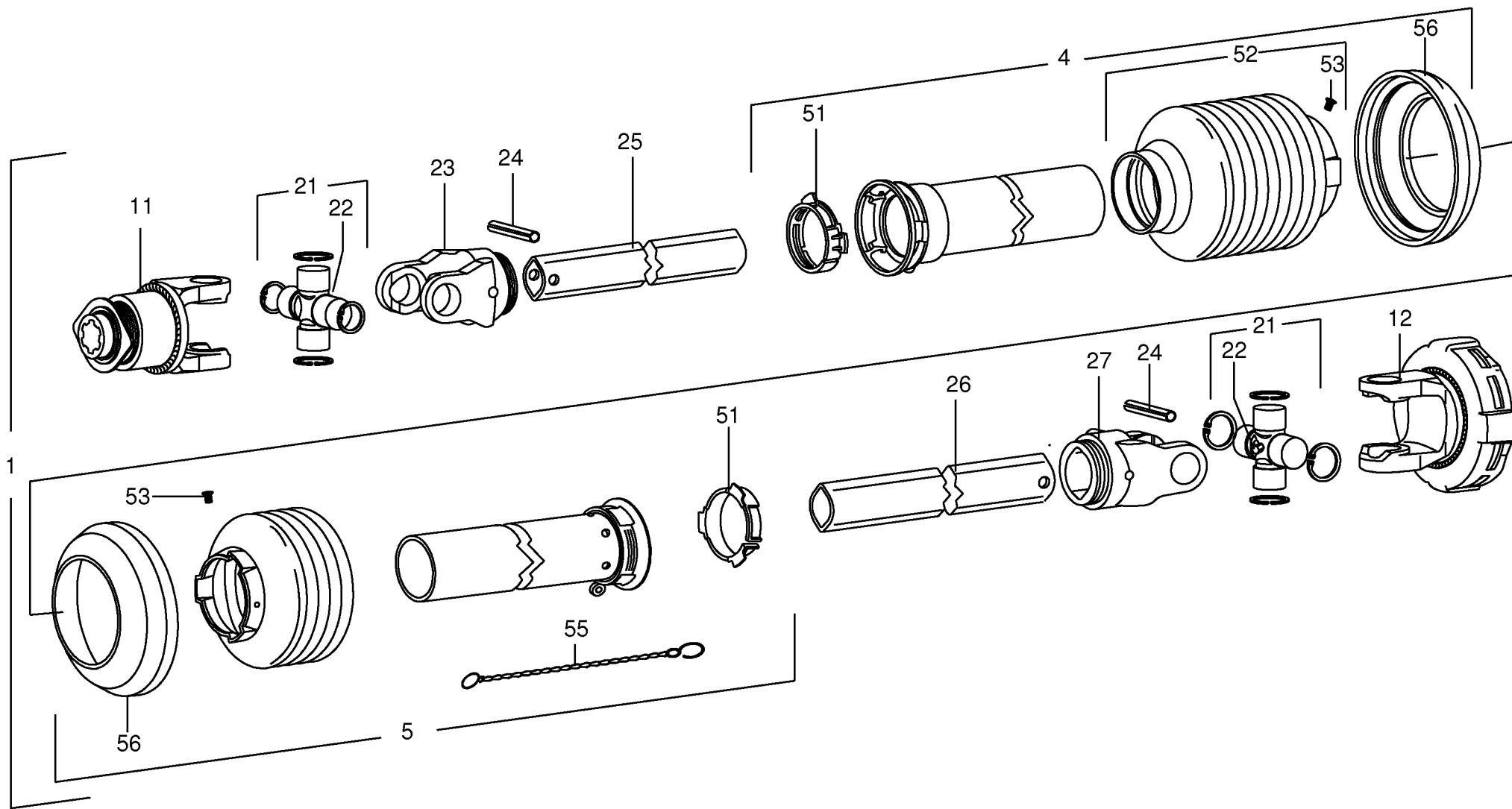


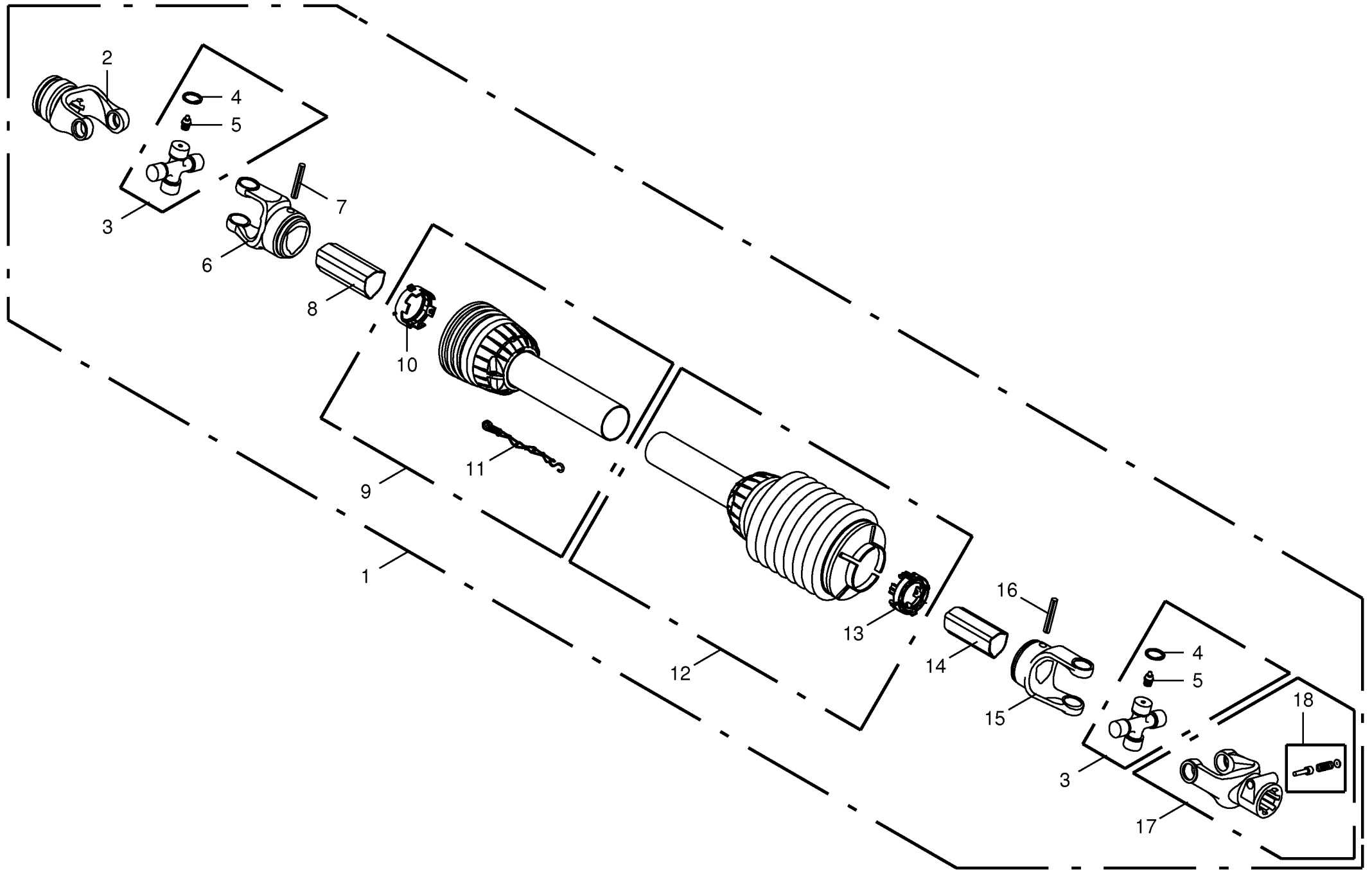






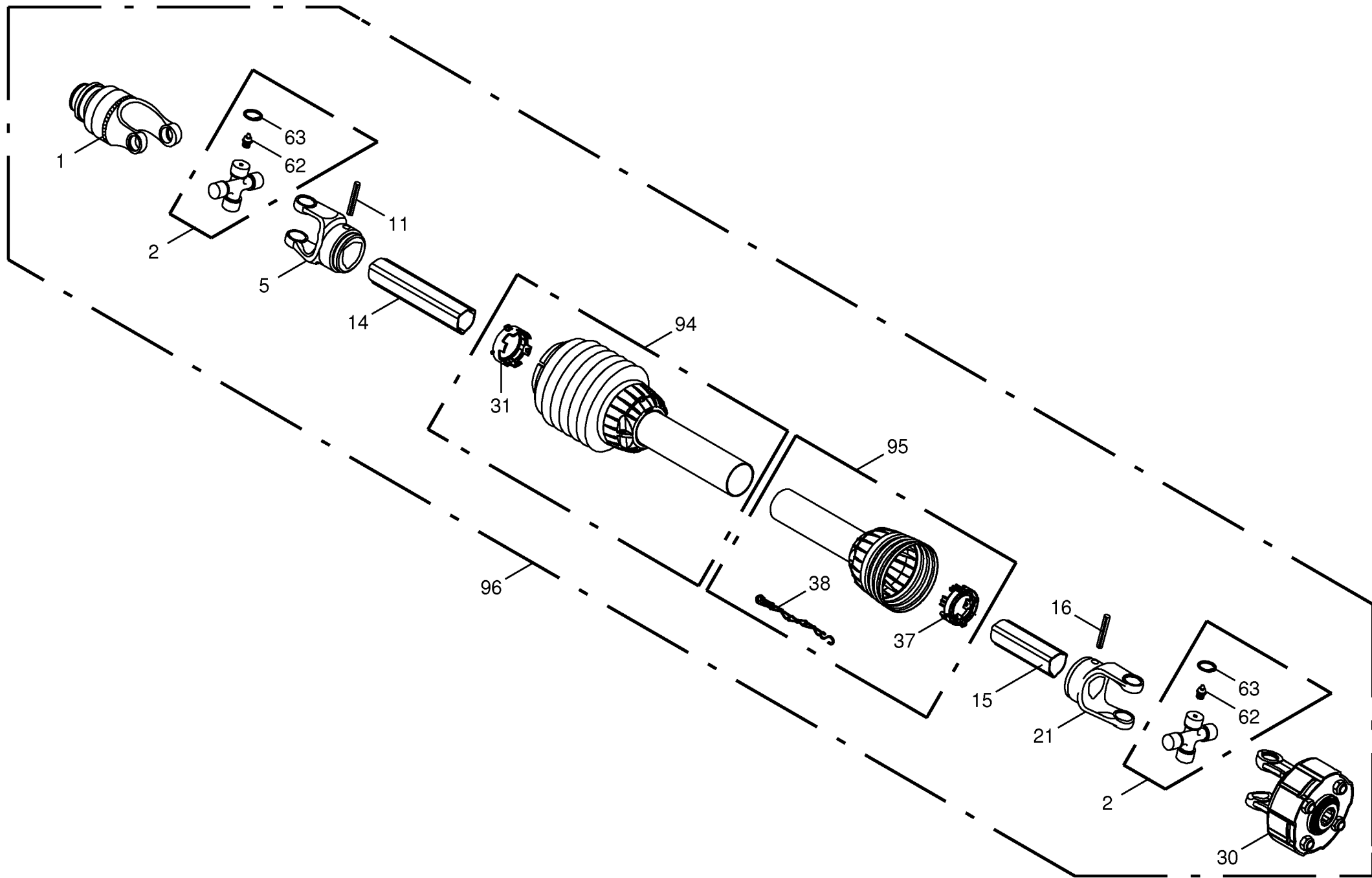




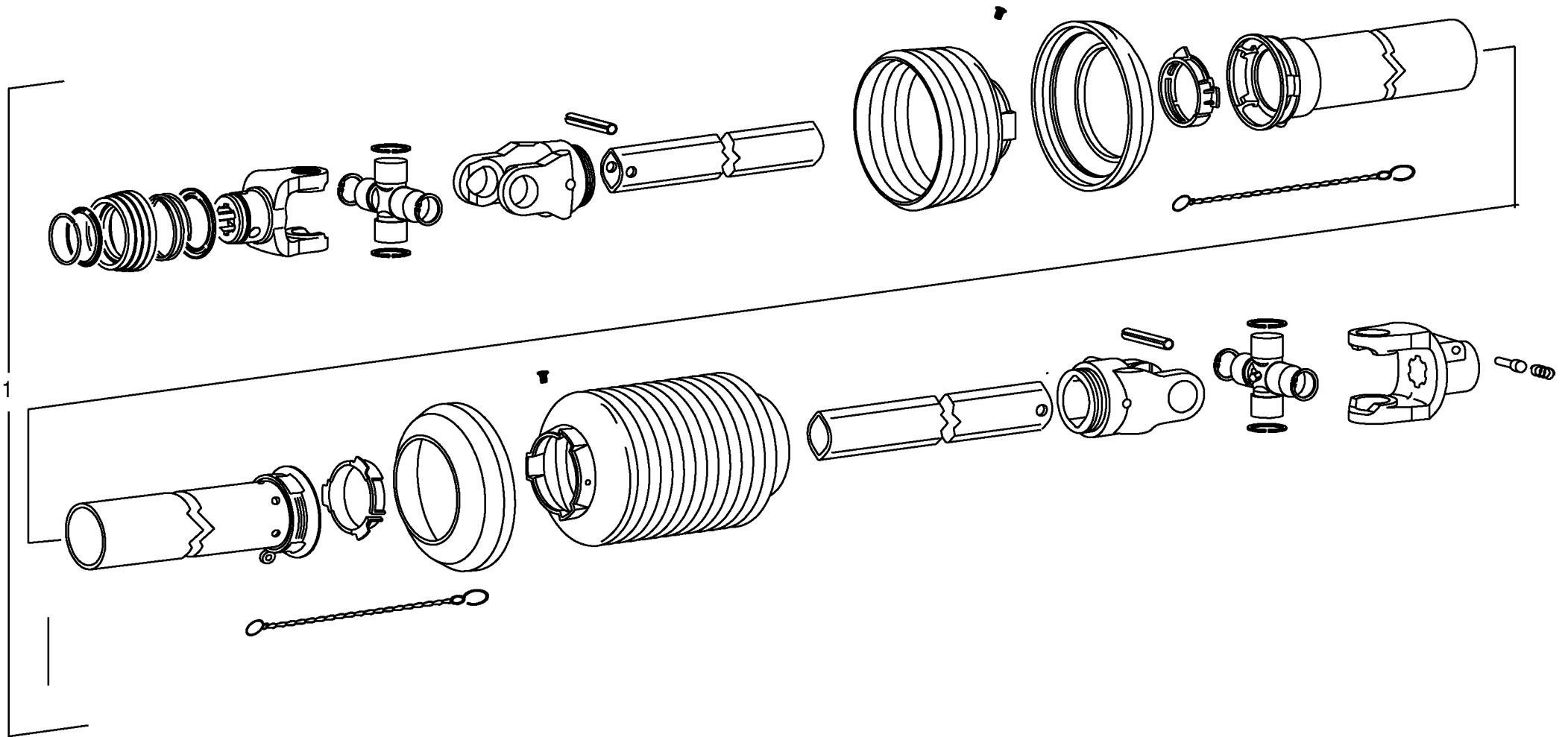


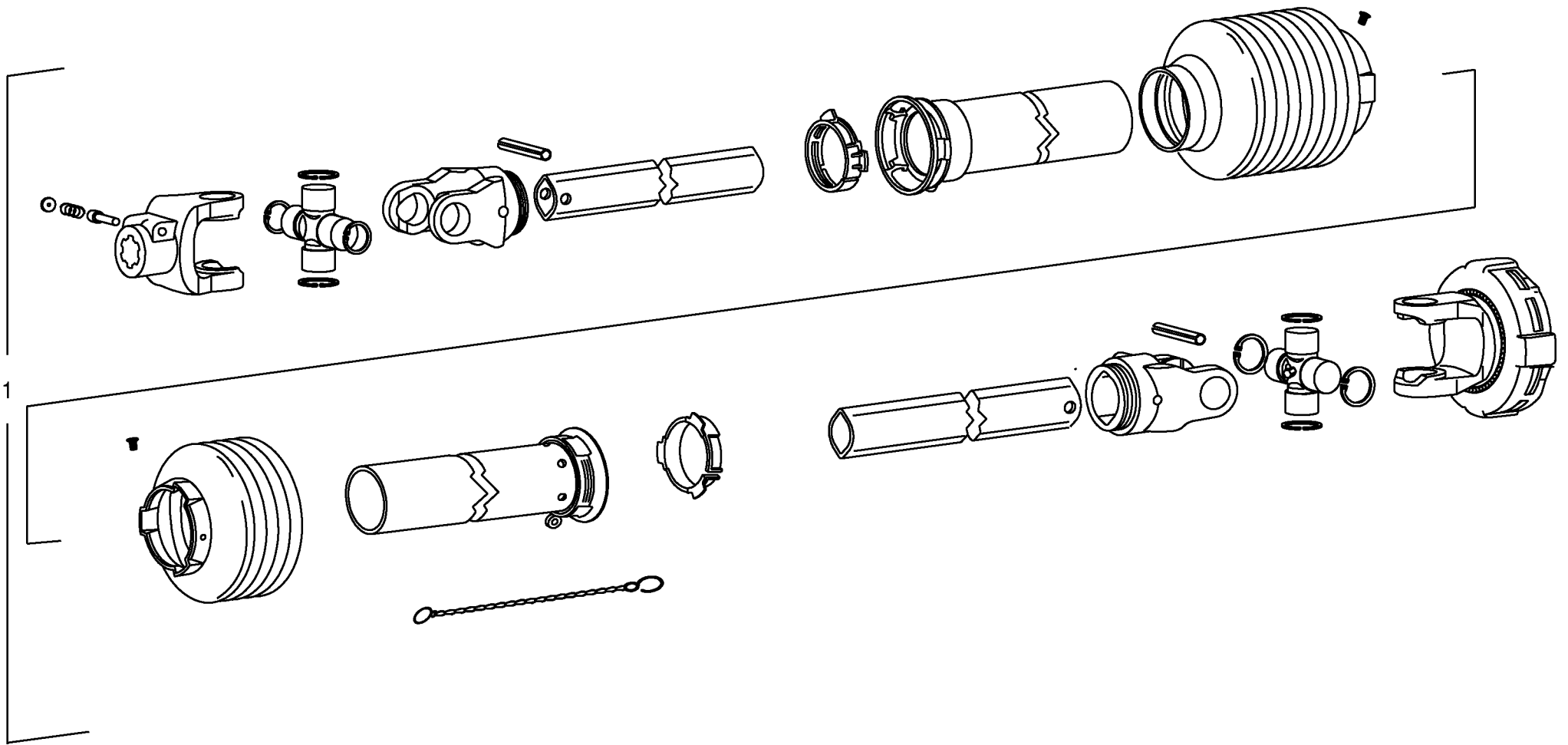
150 050 569 00 / 22.0

150 413 101 01



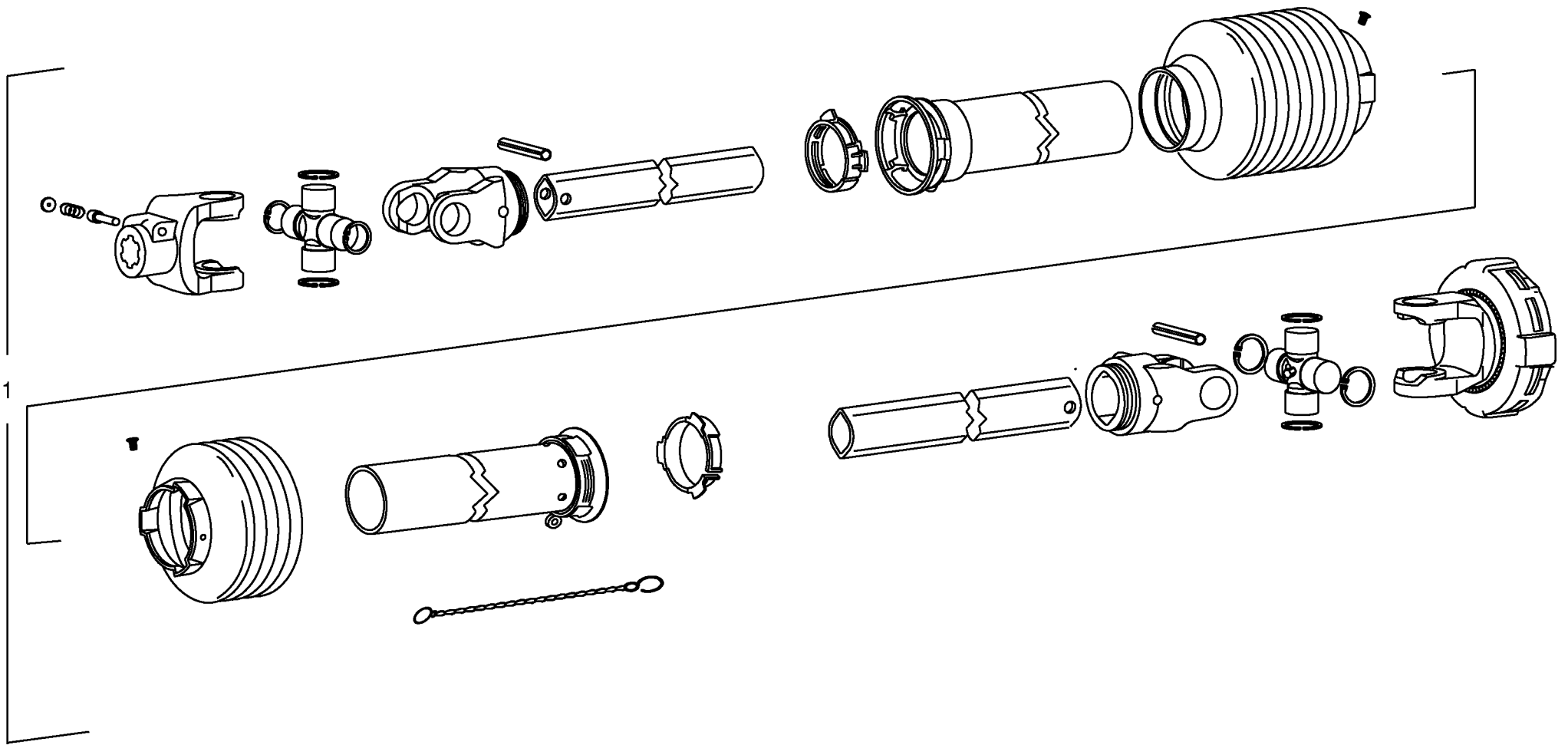
150 050 569 00 / 23.0





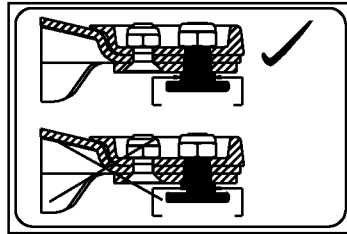
150 050 569 00 / 25.0

150 388 616 01

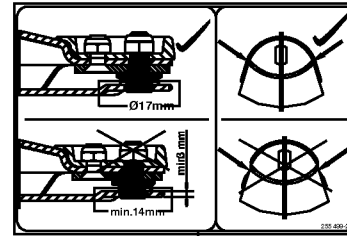




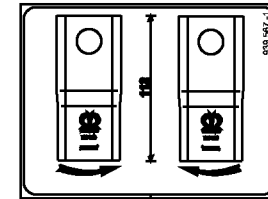
1



2



3



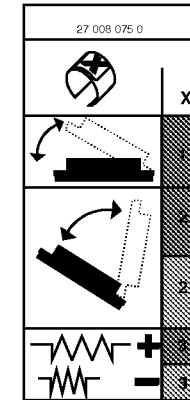
4

- 202 216 2
- Ⓓ Vor der Erstinbetriebnahme und 1x jährlich vor der Ernte muss die Reibkupplung gelüftet werden
 - Ⓔ Vanne-pilote du tracteur - position flottante
 - Ⓔ Vanne-pilote du tracteur - position flottante
 - Ⓔ Vanne-pilote du tracteur - position flottante
 - Ⓔ Vanne-pilote du tracteur - position flottante
 - Ⓔ Vanne-pilote du tracteur - position flottante
 - Ⓔ Vanne-pilote du tracteur - position flottante
 - Ⓔ Vanne-pilote du tracteur - position flottante
 - Ⓔ Vanne-pilote du tracteur - position flottante
 - Ⓔ Vanne-pilote du tracteur - position flottante
 - Ⓔ Vanne-pilote du tracteur - position flottante
 - Ⓔ Vanne-pilote du tracteur - position flottante

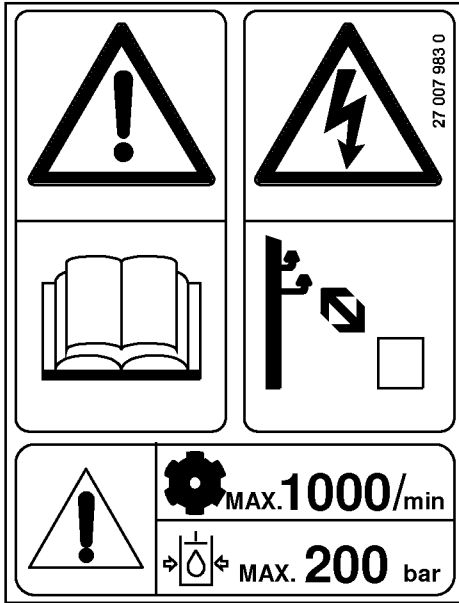
5



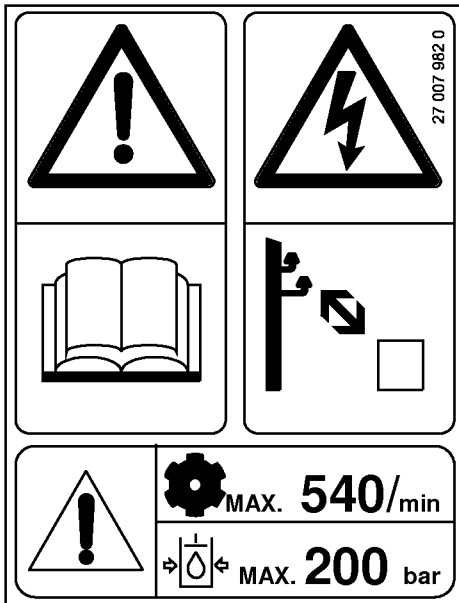
6



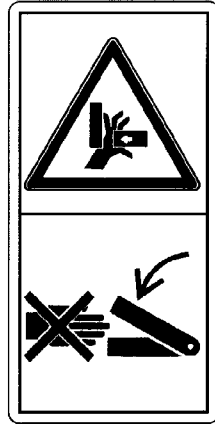
7



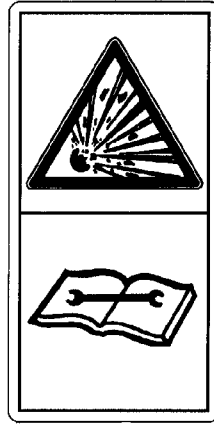
1



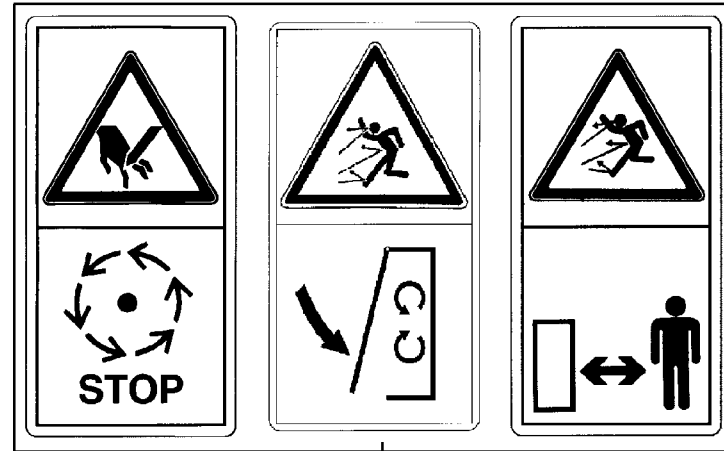
2



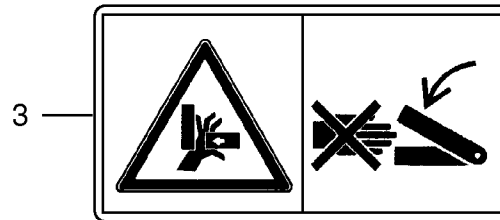
5



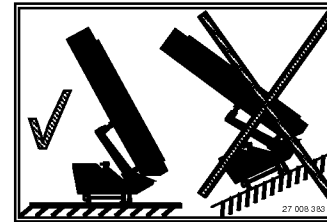
6



7



3



8

ID-NR.	TAFEL	POS.	ID-NR.	TAFEL	POS.	ID-NR.	TAFEL	POS.	ID-NR.	TAFEL	POS.	ID-NR.	TAFEL	POS.
ID-NO.	DIAG.	POS.	ID-NO.	DIAG.	POS.	ID-NO.	DIAG.	POS.	ID-NO.	DIAG.	POS.	ID-NO.	DIAG.	POS.
00 000 001 0	24.0	1	00 253 046 5	16.0	4	00 900 244 0	6.0	9	00 904 064 0	17.0	5	00 908 719 0	2.0	4
00 000 001 0	25.0	1	00 253 047 0	15.0	12	00 900 335 0	13.0	19	00 904 065 3	8.0	3	00 908 719 0	4.0	25
00 000 001 0	26.0	1	00 253 047 0	16.0	13	00 900 392 0	1.0	34	00 904 071 1	8.0	2	00 908 721 0	3.0	10
00 015 242 1	8.0	8	00 253 052 1	15.0	2	00 900 392 0	2.0	2	00 904 071 1	13.0	26	00 908 758 0	4.0	5
00 015 242 1	9.0	7	00 253 052 1	16.0	2	00 900 612 0	1.0	24	00 904 732 2	18.0	8	00 908 758 0	15.0	5
00 139 054 1	3.0	13	00 253 062 3	12.0	2	00 900 614 0	1.0	13	00 904 995 1	8.0	7	00 908 758 0	16.0	11
00 139 080 2	8.0	6	00 253 063 1	12.0	11	00 900 614 0	1.0	18	00 904 995 2	9.0	6	00 909 502 0	5.0	7
00 139 178 2	3.0	12	00 253 065 1	12.0	10	00 900 616 0	4.0	27	00 906 007 1	12.0	3	00 909 611 0	13.0	23
00 139 888 3	15.0	10	00 253 070 3	10.0	1	00 900 616 0	7.0	3	00 906 007 1	13.0	17	00 909 904 1	4.0	24
00 139 888 3	16.0	6	00 253 182 1	4.0	16	00 900 634 0	5.0	9	00 906 010 1	13.0	15	00 909 906 1	1.0	9
00 139 889 3	15.0	10	00 253 421 4	13.0	31	00 900 634 0	13.0	33	00 906 031 0	12.0	39	00 909 906 1	6.0	11
00 139 889 3	16.0	6	00 253 480 1	13.0	25	00 900 636 0	12.0	6	00 906 031 0	13.0	29	00 909 907 0	5.0	8
00 144 415 2	5.0	23	00 253 496 0	8.0	1	00 900 637 0	15.0	14	00 906 040 1	10.0	24	00 909 908 1	1.0	25
00 145 212 1	10.0	19	00 253 547 0	13.0	13	00 900 637 0	16.0	15	00 906 040 1	11.0	24	00 909 908 1	4.0	28
00 145 212 1	11.0	19	00 253 566 3	17.0	1	00 900 639 0	4.0	3	00 906 404 0	13.0	24	00 909 908 1	5.0	21
00 145 215 4	10.0	20	00 253 657 0	17.0	4	00 900 655 0	10.0	16	00 906 949 0	15.0	1	00 909 908 1	7.0	5
00 145 215 4	11.0	20	00 253 659 1	12.0	21	00 900 655 0	11.0	16	00 906 949 0	16.0	1	00 909 908 1	18.0	9
00 145 912 3	4.0	30	00 253 690 1	4.0	22	00 900 655 0	17.0	2	00 908 056 0	15.0	4	00 909 909 1	4.0	4
00 146 974 1	10.0	7	00 253 743 1	15.0	16	00 900 656 0	3.0	7	00 908 056 0	16.0	12	00 909 909 1	12.0	7
00 146 974 1	11.0	7	00 253 743 1	16.0	20	00 900 657 0	7.0	13	00 908 215 0	1.0	45	00 909 909 1	13.0	32
00 146 975 2	11.0	1	00 253 744 0	15.0	11	00 900 657 0	18.0	4	00 908 500 0	1.0	31	00 909 909 1	15.0	13
00 146 976 4	10.0	18	00 253 745 0	16.0	5	00 900 658 0	17.0	9	00 908 500 0	2.0	9	00 909 909 1	16.0	14
00 146 976 4	11.0	18	00 253 777 0	12.0	1	00 900 673 0	1.0	15	00 908 515 1	3.0	8	00 909 910 1	3.0	6
00 146 984 1	10.0	6	00 253 784 1	12.0	20	00 900 673 0	10.0	26	00 908 701 0	1.0	47	00 909 910 1	7.0	10
00 146 984 1	11.0	23	00 255 304 0	4.0	21	00 900 673 0	11.0	26	00 908 701 0	4.0	14	00 909 910 1	8.0	4
00 146 985 2	10.0	23	00 255 498 1	27.0	2	00 900 675 0	12.0	35	00 908 701 0	7.0	11	00 909 910 1	10.0	17
00 146 985 2	11.0	6	00 255 499 2	27.0	3	00 900 676 0	9.0	4	00 908 701 0	8.0	5	00 909 910 1	11.0	17
00 154 566 3	1.0	44	00 256 448 0	7.0	9	00 901 151 1	4.0	23	00 908 701 0	9.0	9	00 909 910 1	13.0	27
00 253 015 3	13.0	12	00 263 092 0	1.0	28	00 901 423 0	7.0	18	00 908 701 0	13.0	8	00 909 910 1	17.0	3
00 253 016 3	13.0	14	00 263 092 0	2.0	6	00 901 451 0	18.0	2	00 908 701 0	17.0	7	00 909 910 1	18.0	3
00 253 020 1	13.0	20	00 267 330 0	10.0	28	00 901 452 0	4.0	11	00 908 701 0	18.0	6	00 909 912 1	1.0	16
00 253 024 3	14.0	4	00 267 330 0	11.0	28	00 901 452 0	17.0	2	00 908 702 0	6.0	24	00 909 912 1	9.0	3
00 253 026 5	14.0	6	00 270 160 1	4.0	13	00 902 401 0	3.0	9	00 908 704 1	1.0	11	00 909 912 1	10.0	27
00 253 028 1	14.0	9	00 274 121 3	1.0	21	00 903 079 1	5.0	19	00 908 704 1	6.0	12	00 909 912 1	11.0	27
00 253 030 0	13.0	4	00 281 769 2	1.0	7	00 903 205 1	1.0	42	00 908 706 0	1.0	20	00 909 912 1	12.0	36
00 253 034 4	12.0	30	00 337 256 3	1.0	30	00 904 017 1	17.0	6	00 908 706 0	4.0	29	00 909 922 1	1.0	46
00 253 042 3	15.0	8	00 337 256 3	2.0	8	00 904 019 2	12.0	37	00 908 706 0	5.0	22	00 910 303 1	9.0	5
00 253 042 3	16.0	8	00 490 161 1	10.0	31	00 904 045 3	15.0	9	00 908 706 0	7.0	6	00 910 327 0	4.0	18
00 253 045 5	16.0	4	00 490 161 1	11.0	31	00 904 045 3	16.0	7	00 908 706 0	18.0	10	00 910 347 0	1.0	35
00 253 045 5	16.0	4	00 900 239 1	1.0	8	00 904 062 2	13.0	26	00 908 719 0	1.0	36	00 910 347 0	2.0	3

ID-NR.	TAFEL	POS.	ID-NR.	TAFEL	POS.	ID-NR.	TAFEL	POS.	ID-NR.	TAFEL	POS.	ID-NR.	TAFEL	POS.
ID-NO.	DIAG.	POS.	ID-NO.	DIAG.	POS.	ID-NO.	DIAG.	POS.	ID-NO.	DIAG.	POS.	ID-NO.	DIAG.	POS.
00 910 365 0	6.0	23	00 911 024 1	11.0	4	00 912 717 2	3.0	17	00 921 234 0	5.0	14	00 937 502 0	14.0	5
00 910 411 1	6.0	10	00 911 130 0	10.0	14	00 912 718 2	4.0	32	00 921 265 1	6.0	1	00 937 568 0	12.0	33
00 910 413 0	1.0	19	00 911 130 0	11.0	14	00 912 721 1	20.0	24	00 922 650 0	1.0	54	00 937 568 0	13.0	30
00 910 413 0	7.0	4	00 911 132 0	10.0	14	00 912 721 1	21.0	24	00 922 651 2	4.0	10	00 937 576 0	13.0	6
00 910 414 0	4.0	6	00 911 132 0	11.0	14	00 914 036 0	1.0	22	00 922 651 2	16.0	17	00 937 579 0	13.0	21
00 910 506 1	4.0	12	00 911 133 0	10.0	14	00 915 122 0	10.0	8	00 922 652 0	5.0	12	00 937 590 0	12.0	13
00 910 506 1	7.0	14	00 911 133 0	11.0	14	00 915 122 0	11.0	8	00 924 007 0	1.0	55	00 937 721 0	12.0	4
00 910 506 1	9.0	8	00 911 133 0	14.0	8	00 915 122 0	12.0	12	00 924 007 0	12.0	34	00 937 721 0	13.0	18
00 910 506 1	17.0	10	00 911 134 0	3.0	19	00 917 004 1	5.0	11	00 924 218 0	7.0	8	00 937 727 0	12.0	15
00 910 506 1	18.0	5	00 911 134 0	10.0	14	00 917 012 2	1.0	40	00 924 227 0	7.0	15	00 937 727 0	13.0	16
00 910 603 0	1.0	14	00 911 134 0	11.0	14	00 917 104 1	1.0	53	00 924 263 0	1.0	5	00 939 278 2	27.0	5
00 910 604 0	7.0	7	00 911 136 1	3.0	19	00 917 104 1	4.0	9	00 925 016 0	4.0	8	00 939 529 0	28.0	6
00 910 609 0	8.0	9	00 911 136 1	12.0	29	00 917 104 1	16.0	18	00 925 155 0	5.0	20	00 939 567 1	27.0	4
00 910 625 0	3.0	11	00 911 529 0	14.0	13	00 918 792 0	6.0	17	00 925 205 2	10.0	10	00 939 576 0	28.0	7
00 910 642 0	3.0	5	00 911 541 0	10.0	12	00 919 103 0	19.0	7	00 925 205 2	11.0	10	00 940 236 0	15.0	19
00 910 727 1	10.0	13	00 911 541 0	11.0	12	00 919 103 0	20.0	22	00 925 205 2	12.0	19	00 940 236 0	16.0	26
00 910 727 1	11.0	13	00 911 541 0	12.0	31	00 919 103 0	21.0	22	00 925 303 2	15.0	15	00 942 196 1	28.0	5
00 910 732 1	5.0	3	00 911 545 0	12.0	24	00 919 105 0	1.0	3	00 926 101 0	10.0	1	00 942 320 0	27.0	1
00 910 741 1	10.0	3	00 911 673 0	10.0	2	00 919 105 0	3.0	16	00 926 101 0	11.0	1	00 942 459 0	28.0	3
00 910 741 1	11.0	3	00 911 673 0	11.0	2	00 919 105 0	22.0	5	00 926 101 0	12.0	32	00 949 273 2	20.0	5
00 910 844 1	1.0	37	00 911 673 0	12.0	18	00 919 105 0	23.0	62	00 926 101 0	13.0	34	00 949 281 0	20.0	52
00 910 885 0	12.0	23	00 911 680 0	12.0	28	00 919 324 0	6.0	16	00 930 137 0	10.0	15	00 949 281 0	21.0	53
00 910 900 0	10.0	22	00 912 066 1	16.0	25	00 919 343 0	6.0	7	00 930 137 0	11.0	15	00 949 351 0	21.0	11
00 910 900 0	11.0	22	00 912 287 1	1.0	52	00 919 376 0	5.0	14	00 930 140 0	12.0	8	00 949 352 0	20.0	53
00 910 902 0	10.0	22	00 912 500 3	5.0	5	00 919 509 0	1.0	32	00 930 167 0	10.0	9	00 949 352 0	21.0	56
00 910 902 0	11.0	22	00 912 530 0	14.0	11	00 919 509 0	2.0	10	00 930 167 0	11.0	9	00 949 354 0	21.0	26
00 910 903 0	10.0	22	00 912 538 0	1.0	50	00 919 630 0	6.0	26	00 930 167 0	12.0	16	00 949 356 1	20.0	4
00 910 903 0	11.0	22	00 912 538 0	3.0	3	00 919 811 1	12.0	14	00 930 341 0	14.0	3	00 949 358 0	21.0	25
00 910 904 0	10.0	22	00 912 611 2	1.0	29	00 919 811 1	13.0	28	00 930 568 0	12.0	22	00 949 397 1	20.0	21
00 910 904 0	11.0	22	00 912 611 2	2.0	7	00 919 918 1	6.0	6	00 932 155 0	10.0	21	00 949 397 1	21.0	21
00 910 904 0	12.0	9	00 912 639 3	1.0	6	00 919 951 0	5.0	15	00 932 155 0	11.0	21	00 949 430 0	20.0	23
00 910 964 0	12.0	17	00 912 643 2	14.0	11	00 920 032 0	5.0	16	00 932 177 0	10.0	5	00 949 430 0	21.0	23
00 910 965 0	12.0	17	00 912 645 2	6.0	18	00 920 926 0	6.0	20	00 932 177 0	11.0	5	00 949 436 0	20.0	27
00 910 974 0	12.0	27	00 912 670 1	1.0	39	00 920 969 0	6.0	3	00 936 049 1	14.0	7	00 949 436 0	21.0	27
00 910 974 0	12.0	38	00 912 670 1	4.0	19	00 921 067 1	6.0	13	00 936 337 1	10.0	11	00 949 445 1	19.0	2
00 911 022 0	10.0	4	00 912 677 2	22.0	16	00 921 077 1	6.0	15	00 936 337 1	11.0	11	00 949 447 0	19.0	6
00 911 022 0	11.0	4	00 912 677 2	23.0	16	00 921 131 2	19.0	1	00 936 339 1	10.0	30	00 949 463 0	20.0	11
00 911 023 0	10.0	4	00 912 678 2	22.0	7	00 921 145 0	5.0	17	00 936 339 1	11.0	30	00 949 521 0	19.0	9
00 911 023 0	11.0	4	00 912 678 2	23.0	11	00 921 145 0	6.0	2	00 936 339 1	12.0	5	00 949 567 0	21.0	12
00 911 024 1	10.0	4	00 912 714 2	4.0	17	00 921 171 1	5.0	18	00 936 365 1	12.0	25	00 949 568 0	21.0	12

ID-NR. ID-NO.	TAFEL DIAG.	POS. POS.	ID-NR. ID-NO.	TAFEL DIAG.	POS. POS.	ID-NR. ID-NO.	TAFEL DIAG.	POS. POS.	ID-NR. ID-NO.	TAFEL DIAG.	POS. POS.	ID-NR. ID-NO.	TAFEL DIAG.	POS. POS.
00 949 630 0	19.0	5	20 030 073 0	1.0	10	20 033 010 0	5.0	4	27 007 536 0	5.0	13			
00 949 630 0	20.0	12	20 030 255 0	12.0	26	20 033 011 0	1.0	17	27 007 843 0	6.0	19			
00 949 852 1	20.0	56	20 031 007 0	16.0	23	20 033 014 0	1.0	38	27 007 844 0	6.0	14			
00 949 852 1	21.0	55	20 031 061 0	15.0	17	20 033 015 0	3.0	4	27 007 982 0	28.0	2			
00 949 852 1	22.0	11	20 031 061 0	16.0	19	20 033 016 0	4.0	31	27 007 983 0	28.0	1			
00 949 852 1	23.0	38	20 031 062 0	15.0	17	20 033 017 0	3.0	2	27 008 075 0	6.0	25			
00 949 861 0	20.0	54	20 031 062 0	15.0	17	20 033 018 0	1.0	49	27 008 075 0	27.0	7			
00 949 861 0	21.0	51	20 031 062 0	16.0	19	20 033 105 0	18.0	7	27 008 383 0	2.0	11			
00 955 355 1	21.0	52	20 031 062 0	16.0	19	20 033 110 0	7.0	19	27 008 383 0	28.0	8			
00 955 394 1	20.0	25	20 031 063 0	15.0	18	20 033 111 0	7.0	1	27 008 486 0	20.0	55			
00 955 395 1	20.0	26	20 031 063 0	16.0	21	20 033 117 0	1.0	43	27 011 028 0	22.0	2			
00 955 429 0	21.0	5	20 031 123 2	14.0	10	20 033 118 0	1.0	41	27 011 153 0	22.0	10			
00 955 490 0	21.0	4	20 031 128 1	13.0	5	20 033 119 0	1.0	27	27 011 153 0	23.0	31			
00 956 090 1	20.0	1	20 031 128 1	14.0	1	20 033 123 0	4.0	20	27 011 155 0	22.0	13			
00 956 091 2	21.0	1	20 031 129 1	13.0	5	20 033 137 0	7.0	2	27 011 155 0	23.0	37			
00 956 111 0	22.0	18	20 031 129 1	14.0	1	20 033 165 0	4.0	2	27 022 535 0	23.0	30			
00 956 113 1	22.0	17	20 031 133 0	14.0	2	20 033 195 0	1.0	1	90 000 109 0	13.0	22			
00 956 219 0	22.0	8	20 031 134 0	14.0	12	20 033 196 0	13.0	2	90 000 123 0	13.0	7			
00 956 219 0	23.0	14	20 031 136 0	14.0	12	20 033 197 0	13.0	3	90 000 127 0	3.0	15			
00 956 243 0	22.0	14	20 031 137 0	14.0	2	20 033 458 0	16.0	16	90 000 338 0	16.0	24			
00 956 243 0	23.0	15	20 031 144 0	14.0	16	20 033 459 0	6.0	21	90 001 442 0	1.0	4			
00 956 416 0	22.0	9	20 031 544 0	9.0	2	20 033 485 0	3.0	18	90 001 478 0	1.0	2			
00 956 421 0	22.0	12	20 031 549 0	9.0	1	20 033 526 0	1.0	48	90 001 694 0	6.0	8			
00 956 423 0	23.0	94	20 031 607 0	1.0	51	20 033 533 0	13.0	1	90 001 863 0	14.0	15			
00 956 424 0	23.0	95	20 032 527 0	1.0	12	20 033 538 0	5.0	2						
00 956 425 0	23.0	30	20 032 549 0	1.0	23	20 033 543 0	1.0	33						
00 956 426 2	22.0	3	20 032 567 0	2.0	5	20 034 024 0	4.0	26						
00 956 426 2	23.0	2	20 032 569 0	2.0	1	20 034 357 0	7.0	2						
00 956 430 0	22.0	4	20 032 570 0	3.0	1	20 042 900 0	1.0	56						
00 956 430 0	23.0	63	20 032 573 0	5.0	1	27 000 058 0	20.0	13						
00 956 435 0	22.0	6	20 032 574 0	4.0	15	27 001 397 0	19.0	3						
00 956 435 0	23.0	5	20 032 575 0	7.0	17	27 002 543 0	6.0	4						
00 956 439 0	22.0	15	20 032 576 0	4.0	1	27 002 551 0	6.0	5						
00 956 439 0	23.0	21	20 032 577 0	7.0	12	27 003 452 0	19.0	8						
00 956 474 0	21.0	12	20 032 580 0	18.0	1	27 003 453 0	19.0	4						
00 956 514 0	23.0	30	20 032 655 0	3.0	14	27 005 384 0	27.0	6						
00 956 515 0	23.0	1	20 032 781 0	7.0	16	27 006 590 0	1.0	26						
00 957 090 0	22.0	1	20 032 860 0	4.0	7	27 007 076 0	6.0	17						
00 957 091 0	23.0	96	20 033 004 0	5.0	6	27 007 077 0	5.0	13						
20 030 024 0	17.0	8	20 033 005 0	5.0	10	27 007 503 0	6.0	22						

Verwenden Sie nur

Original-KRONE-Ersatzteile!

Das gibt Sicherheit und spart Kosten!

Original-KRONE-Ersatzteile bieten die Garantie für höchste Verschleißfestigkeit, lange Lebensdauer und preiswerten Einkauf!

Sie bekommen bei Krone nur Materialien in einwandfreier Qualität und absolut passend für Ihre KRONE-Maschinen. Bei Verwendung von Original-KRONE-Ersatzteilen entspricht das Gerät in Funktion und Arbeitsweise wieder der ursprünglichen Ausführung!

Imitationen und Kopien von Teilen, speziell auf dem Sektor Verschleißteile halten nicht das, was sie vom Aussehen vielleicht versprechen. Material-Qualität kann man schlecht optisch prüfen - daher größte Vorsicht bei Billigangeboten!

**Darum lieber gleich
Original-KRONE-Ersatzteile!**

**Ersatzteil-Katalog auch
auf CD-ROM erhältlich!**

Use

Original-KRONE parts only

**This will increase operational reliability
and help to save costs!**

Original-KRONE spare parts give you the guarantee of maximum resistance to wear, long life and low prices!

KRONE provides you with parts of first-rate quality which are perfectly suitable for your KRONE machine. By using original KRONE parts you can be sure that function and mode of operation are again as satisfactory as on a new machine!

Imitations and copies of parts, in particular working parts, are not as reliable as they seem to be! The quality of material can hardly be checked with the eye - it is therefore not advisable to purchase imitation parts even if these are cheaper.

**In any case it's better
to use original KRONE parts!**

**Spare parts list also
available as CD-ROM!**

N'utiliser que

**des pièces de rechange
d'origine KRONE!**

**Vous augmentez ainsi la sécurité de
fonctionnement et vous réduisez
considérablement vos coûts!**

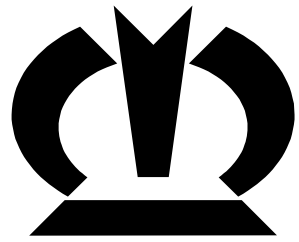
Les pièces de rechange d'origine Krone vous donnent la sécurité d'une exceptionnelle résistance à l'usure, d'une longue durée d'utilisation et de prix avantageux.

KRONE vous offre uniquement des pièces de première qualité parfaitement adaptées à votre machine KRONE. En utilisant des pièces de rechange d'origine KRONE vous pouvez être sûr que fonctionnement et le mode de travail sont identiques à ceux d'une machine nouvelle.

Les imitations et copies de pièces, tout particulièrement des pièces d'usure, ne tiennent pas ce qu'elles promettent par leur apparence! En effet il n'est guère possible de vérifier visuellement la qualité d'une matière. Il est donc prudent de juger avec scepticisme les pièces de rechange à bas prix!

**De toute façon il est raisonnable de donner la préférence aux
pièces de rechange d'origine KRONE!**

**Catalogue de pièces de rechange
également disponible sur CD-ROM!**



KRONE

... konsequent, kompetent

Maschinenfabrik Bernard Krone GmbH

Heinrich-Krone-Straße 10, D-48480 Spelle
Postfach 11 63, D-48478 Spelle

Phone +049 (0) 59 77/935-0
Fax +049 (0) 59 77/935-339 - Zentrale
Fax +049 (0) 59 77/935-239 - ET-Lager

Internet: <http://www.krone.de>
eMail: info.ldm@krone.de